



User Manual

PCA-6782

**Intel® Atom™ Dual-Core D525/
Fanless N455 CPU, ISA Half-size
SBC with VGA / LVDS / Single-GbE /
SATA / COM**

Trusted ePlatform Services

ADVANTECH

Copyright

The documentation and the software included with this product are copyrighted 2010 by Advantech Co., Ltd. All rights are reserved. Advantech Co., Ltd. reserves the right to make improvements in the products described in this manual at any time without notice.

No part of this manual may be reproduced, copied, translated or transmitted in any form or by any means without the prior written permission of Advantech Co., Ltd. Information provided in this manual is intended to be accurate and reliable. However, Advantech Co., Ltd. assumes no responsibility for its use, nor for any infringements of the rights of third parties, which may result from its use.

Certifications

CE

FCC Class A

A Message to the Customer

Advantech customer services

Each and every Advantech product is built to the most exacting specifications to ensure reliable performance in the harsh and demanding conditions typical of industrial environments. Whether your new Advantech equipment is destined for the laboratory or the factory floor, you can be assured that your product will provide the reliability and ease of operation for which the name Advantech has come to be known.

Your satisfaction is our primary concern. Here is a guide to Advantech's customer services. To ensure you get the full benefit of our services, please follow the instructions below carefully.

Technical support

We want you to get the maximum performance from your products. So if you run into technical difficulties, we are here to help. For the most frequently asked questions, you can easily find answers in your product documentation. These answers are normally a lot more detailed than the ones we can give over the phone.

So please consult this manual first. If you still cannot find the answer, gather all the information or questions that apply to your problem, and with the product close at hand, call your dealer. Our dealers are well trained and ready to give you the support you need to get the most from your Advantech products. In fact, most problems reported are minor and are able to be easily solved over the phone.

In addition, free technical support is available from Advantech engineers every business day. We are always ready to give advice on application requirements or specific information on the installation and operation of any of our products.

Product Warranty (2 years)

Advantech warrants to you, the original purchaser, that each of its products will be free from defects in materials and workmanship for two years from the date of purchase.

This warranty does not apply to any products which have been repaired or altered by persons other than repair personnel authorized by Advantech, or which have been subject to misuse, abuse, accident or improper installation. Advantech assumes no liability under the terms of this warranty as a consequence of such events.

Because of Advantech's high quality-control standards and rigorous testing, most of our customers never need to use our repair service. If an Advantech product is defective, it will be repaired or replaced at no charge during the warranty period. For out-of-warranty repairs, you will be billed according to the cost of replacement materials, service time and freight. Please consult your dealer for more details.

If you think you have a defective product, follow these steps:

1. Collect all the information about the problem encountered. (For example, CPU speed, Advantech products used, other hardware and software used, etc.) Note anything abnormal and list any onscreen messages you get when the problem occurs.
2. Call your dealer and describe the problem. Please have your manual, product, and any helpful information readily available.
3. If your product is diagnosed as defective, obtain an RMA (return merchandise authorization) number from your dealer. This allows us to process your return more quickly.
4. Carefully pack the defective product, a fully-completed Repair and Replacement Order Card and a photocopy proof of purchase date (such as your sales receipt) in a shippable container. A product returned without proof of the purchase date is not eligible for warranty service.
5. Write the RMA number visibly on the outside of the package and ship it prepaid to your dealer.

Before you begin installing your single board computer, please make sure that the following materials have been shipped:

If any of these items are missing or damaged, contact your distributor or sales representative immediately.

We have carefully inspected the PCA-6782 mechanically and electrically before shipment. It should be free of marks and scratches and in perfect working order upon receipt.

As you unpack the PCA-6782, check it for signs of shipping damage. (For example, damaged box, scratches, dents, etc.) If it is damaged or it fails to meet the specifications, notify our service department or your local sales representative immediately. Also notify the carrier. Retain the shipping carton and packing material for inspection by the carrier. After inspection, we will make arrangements to repair or replace the unit.

Initial Inspection


Before you begin installing your single board computer, please make sure that the following materials have been shipped:

■	1 PCA-6782D(N) single board computer	
■	1 CPU Cooler for Atom D525 CPU (Only Available for D SKU)	P/N: 1960046526N001
■	1 PCA-6782 Startup Manual	
■	1 CD with driver utility and manual (in PDF format)	
■	1 Ultra ATA 66/100 HDD cables	P/N: 1701400452
■	2 Serial ATA HDD data cable	P/N: 1700003194
■	2 Serial ATA HDD power cable	P/N: 1703150102
■	1 Print port & COM part cable kit	P/N: 1700008954
■	1 ATX Feature Cable	P/N: 1700002343
■	1 4-Port USB cable kit	P/N: 1700014398
■	1 Y cable for PS/2 keyboard and PS/2 mouse	P/N: 1700060202
■	1 ATX power cable 20P/7P 10cm	P/N: 1703070101
■	1 AT Power Cable	P/N: 1703080101
■	1 Jumper Pack	P/N: 9689000002
■	1 Warranty card	

If any of these items are missing or damaged, contact your distributor or sales representative immediately.

We have carefully inspected the PCA-6782 mechanically and electrically before shipment. It should be free of marks and scratches and in perfect working order upon receipt.

As you unpack the PCA-6782, check it for signs of shipping damage. (For example, damaged box, scratches, dents, etc.) If it is damaged or it fails to meet the specifications, notify our service department or your local sales representative immediately. Also notify the carrier. Retain the shipping carton and packing material for inspection by the carrier. After inspection, we will make arrangements to repair or replace the unit.

Note!  Using PCA-6782D's proprietary CPU cooler included in its package is a must. Other brands of CPU coolers are NOT compatible with PCA-6782. PCA-6782N is a fanless CPU type and does not require installing a CPU cooler.

Verified Memory List

Brand	Size	Speed	Type	ECC	Vendor PN	Advantech PN	Memory
Transcend	256 MB	DDR2 667	SODIMM DDR2	N	TS32MSQ64V6M	NA	Hynix HY5PS121621B FP-Y5 (32x16)
	512 MB	DDR2 667	SODIMM DDR2	N	TS6Q SJ23002-6S/TS64MSQ64V6J	96SD2-512M667NN-TR	SAMSUNG K4T51083QC ZCE6 (64x8)
	512 MB	DDR2 667	SODIMM DDR2	N	Hynix HY5PS121621B FP-Y5	NA	Hynix HY5PS121621B FP-Y5 (32x16)
	1 GB	DDR2 667	SODIMM DDR2	N	TS128MSQ64V6J	NA	SAMSUNG K4T51083QC ZCE6 (64x8)
	2 GB	DDR2 667	SODIMM DDR2	N	TS5QSU27300-6M	96SD2-2G667NN-TR	Micron D9HNL (128x8)
Apacer	512 MB	DDR2 667	SODIMM DDR2	N	78.92G63.422	NA	ELPIDA E5108AG-6E-E (64x8)
	1 GB	DDR2 667	SODIMM DDR2	N	78.02G63.423	96SD2-1G667NN-AP	ELPIDA E5108AGBG-6E-E (64x8)
	2 GB	DDR2 667	SODIMM DDR2	N	78.A2G72.425	96SD2-2G667NN-AP1	ELPIDA E1108AFBG-8E-F (128x8)
DSL	256 MB	DDR2 667	SODIMM DDR2	N	NA	NA	ELPIDA E5116AF-6E-E (32x16)
	512 MB	DDR2 667	SODIMM DDR2	N	NA	NA	ELPIDA E5108AGBG-6E-E (64x8)
	1 GB	DDR2 667	SODIMM DDR2	N	NA	NA	ELPIDA E5108AGBG-6E-E (64x8)
	2 GB	DDR2 667	SODIMM DDR2	N	NA	NA	ELPIDA E1108ACSE-6E-E (128x8)

Certification and Safety Instructions

This device complies with the requirements in part 15 of the FCC rules: Operation is subject to the following two conditions:

1. This device may not cause harmful interference, and
2. This device must accept any interference received, including interference that may cause undesired operation

This equipment has been tested and found to comply with the limits for a Class A digital device, pursuant to Part 15 of the FCC Rules. These limits are designed to provide reasonable protection against harmful interference when the equipment is operated in a commercial environment. This equipment generates, uses, and can radiate radio frequency energy and, if not installed and used in accordance with the instruction manual, may cause harmful interference to radio communications. Operation of this device in a residential area is likely to cause harmful interference in which case the user will be required to correct the interference at his/her own expense. The user is advised that any equipment changes or modifications not expressly approved by the party responsible for compliance would void the compliance to FCC regulations and therefore, the user's authority to operate the equipment.

Caution! *There is a danger of a new battery exploding if it is incorrectly installed. Do not attempt to recharge, force open, or heat the battery. Replace the battery only with the same or equivalent type recommended by the manufacturer. Discard used batteries according to the manufacturer's instructions.*



Contents

Chapter 1 Hardware Configuration.....1

1.1	Introduction	2
1.2	Features	2
1.3	Specifications	3
1.3.1	System	3
1.3.2	Memory	3
1.3.3	Input/Output	3
1.3.4	Graphic interface.....	3
1.3.5	Ethernet LAN	4
1.3.6	Industrial features	4
1.3.7	Mechanical and environmental specifications.....	4
1.4	Jumpers and Connectors	5
	Table 1.1: Jumper descriptions	5
	Table 1.2: Connector descriptions.....	5
1.5	Board Layout: Jumper and Connector Locations.....	7
	Figure 1.1 Board Layout	7
1.6	PCA-6782 Block Diagram	8
	Figure 1.2 Block Diagram	8
1.7	Safety Precautions	8
1.8	System Memory	9
1.9	Memory Installation Procedures.....	9
1.10	Processor Installation.....	10
1.11	CPU Cooler Installation.....	10

Chapter 2 Connecting Peripherals & Jumper Settings11

2.1	Introduction	12
2.2	IDE Connector (IDE1)	12
	Figure 2.1 PCA-6782 IDE1 location.....	12
2.3	Floppy Drive Connector (FDD1).....	13
	Figure 2.2 PCA-6782 FDD1 location	13
2.4	Parallel Port (LPT1).....	14
	Figure 2.3 PCA-6782 LPT1 location	14
2.5	VGA Connector (VGA1).....	15
	Figure 2.4 VGA Connector (VGA1)	15
2.6	Serial Ports (COM1, COM2)	15
	Figure 2.5 Serial Ports (COM1, COM2).....	15
2.7	PS/2 Keyboard/Mouse Connector (KBMS1)	16
	Figure 2.6 PS/2 Keyboard/Mouse Connector (KBMS1)	16
2.8	External Keyboard Pin Header (KBMS2).....	17
	Figure 2.7 External Keyboard Connector (KBMS2).....	17
2.9	CPU Fan Connectors (CPUFAN1).....	17
	Figure 2.8 CPU Fan Connectors (CPUFAN1)	17
2.10	Front Panel Connectors (JFP1)	18
	Figure 2.9 Front Panel Connectors (JFP1).....	18
2.10.1	ATX Power Button (JFP1 Pin 9~10)	18
2.10.2	Reset (JFP1 Pin 7~8)	18
2.10.3	Suspend LED (JFP1 Pin 5~6).....	18
2.10.4	Power LED and keyboard lock connector (JFP1 Pin 3~4).....	18
	Table 2.1: ATX power supply LED status (No support for AT power).....	18
2.10.5	HDD LED (JFP1 Pin 1~2).....	19

2.11	Watch Dog Timer (JWDT1) / Infrared (JIR1)	19
	Figure 2.10 Watch Dog Timer (JWDT1) / Infrared (JIR1)	19
2.11.1	Watchdog timer output (JWDT1)	19
	Table 2.2: Watchdog timer output (JWDT1)	19
2.11.2	Infrared Connector (JIR1)	19
2.12	Single Giga LAN RJ45 connector (LAN1)	20
	Figure 2.11 Single Giga LAN RJ45 connector (LAN1)	20
2.13	Serial ATA interface (SATA1 ~ SATA3)	20
	Figure 2.12 Serial ATA interface (SATA1 ~ SATA3)	20
2.14	GPIO header (GPIO1)	21
	Figure 2.13 GPIO header (GPIO1)	21
2.15	LVDS panel power selection (JLVDS1)	21
	Table 2.3: LVDS panel power selection (JLVDS1)	21
2.16	LVDS VBR selection (JVBR1)	22
	Table 2.4: LVDS VBR selection (JVBR1)	22
2.17	CMOS clear (CMOS1)	22
	Table 2.5: CMOS (CMOS1)	22
2.18	ATX Feature connector(ATXF1)	23
2.19	ATX power control connector (ATX1)	24
2.20	System FAN connector (SYSFAN1)	24
2.21	LVDS Signal and Power Connectors (LVDS1)	25
2.22	USB Ports (USB 1 ~ 8)	25
2.23	CF Card Socket	26
2.24	Low Pin Count Device Connection Pin Header	26

Chapter 3 AMI BIOS Setup..... 27

	Figure 3.1 Setup Program Initial Screen	28
3.1	Entering Setup	29
3.2	Main Setup	29
	Figure 3.2 Main Setup Screen	29
3.2.1	System time / System date	29
3.3	Advanced BIOS Features Setup	30
	Figure 3.3 Advanced BIOS Features Setup Screen	30
3.3.1	CPU Configuration	31
	Figure 3.4 CPU Configuration Settings	31
3.3.2	IDE Configuration	32
	Figure 3.5 IDE Configuration	32
3.3.3	Super I/O Configuration	33
	Figure 3.6 Super I/O Configuration	33
3.3.4	Hardware Health Function	34
	Figure 3.7 Hardware Health Configuration	34
3.3.5	APM Configuration	35
	Figure 3.8 APM Configuration	35
3.4	Event Logging Details	36
	Figure 3.9 Event Logging Details	36
3.5	USB Configuration	36
	Figure 3.10 USB Configuration	36
3.6	PCI/PNP Setup	37
	Figure 3.11 PCI/PNP Setup	37
3.7	Boot Setup Utility	38
	Figure 3.12 Boot Settings Configuration	38
3.8	Security Setup	39
	Figure 3.13 Password Configuration	39
3.9	Advanced Chipset Settings	40
	Figure 3.14 Advanced Chipset Settings	40
	Figure 3.15 South Bridge Configuration	42
3.10	Exit Options	43
	Figure 3.16 Exit Options	43

	3.10.1 Save Changes and Exit	43
	3.10.2 Discard Changes and Exit	43
	3.10.3 Discard Changes	43
	3.10.4 Load Optimal Defaults	44
	3.10.5 Load Failsafe Defaults	44
Chapter 4	Value-Added Software Services	45
4.1	Value-Added Software Services	46
4.1.1	Software API	46
4.1.2	Software Utility	48
Chapter 5	Chipset Software Installation Utility	49
5.1	Before You Begin	50
5.2	Introduction	50
5.3	Windows 7/XP Driver Setup	51
Chapter 6	Integrated Graphic Device Setup	53
6.1	Introduction	54
6.2	Windows 7/XP Driver Setup	54
Chapter 7	LAN Configuration	55
7.1	Introduction	56
7.2	Installation	56
7.3	Windows 7/XP Driver Setup	56
Appendix A	Programming the Watchdog Timer ..	57
A.1	Watchdog Timer	58
A.1.1	Watchdog Timer Overview	58
A.1.2	Reset/ Interrupt Selection	58
A.1.3	Programming the Watchdog Timer	59
	Table A.1: Watchdog Timer Registers	60
A.1.4	Example Program	61
Appendix B	I/O Pin Assignments	65
B.1	Front Panel Connectors (JFP1)	66
	Table B.1: Front Panel Connectors (JFP1)	66
B.2	USB Ports (USB12/USB34/USB56/USB78)	66
	Table B.2: USB Ports (USB12/USB34/USB56/USB78)	66
B.3	IR Connector (JIR1)	67
	Table B.3: IR Connector (JIR1)	67
B.4	Serial port (COM1)	67
	Table B.4: Serial port (COM1)	67
B.5	Serial port (COM2)	68
	Table B.5: Serial port (COM2)	68
B.6	PS/2 keyboard and mouse connector (KBMS1)	68
	Table B.6: PS/2 keyboard and mouse connector (KBMS1)	68
B.7	External keyboard and mouse connector (KBMS2)	69
	Table B.7: External keyboard and mouse connector (KBMS2)	69
B.8	ATX Feature connector(ATXF1)	69

	Table B.8: ATX Feature connector(ATXF1).....	69
B.9	CPU FAN connector (CPUFAN1)	70
	Table B.9: CPU FAN connector (CPUFAN1).....	70
B.10	System FAN connector (SYSFAN1)	70
	Table B.10: System FAN connector (SYSFAN1).....	70
B.11	Audio Interface Connector (HDAUD1)	70
	Table B.11: Audio Interface Connector (HDAUD1)	70
B.12	GPIO Header (GPIO1).....	71
	Table B.12: GPIO Header (GPIO1)	71
B.13	LVDS Connector (LVDS1)	71
	Table B.13: LVDS Connector (LVDS1).....	71
B.14	LCD Inverter Connector (INV1).....	72
	Table B.14: LCD Inverter Connector (INV1)	72
B.15	Low Pin Count Header (LPC1)	72
	Table B.15: Low Pin Count Header (LPC1).....	72
B.16	ATX Power Control Connector (ATX1)	73
	Table B.16: ATX Power Control Connector (ATX1).....	73
B.17	VGA Connector (VGA1).....	73
	Table B.17: VGA Connector (VGA1)	73
B.18	Negative power input connector (12V1).....	74
	Table B.18: Negative power input connector (12V1)	74
B.19	Case open (JCASE1).....	74
	Table B.19: Case open (JCASE1)	74
B.20	FDD connector (FDD1).....	75
	Table B.20: FDD connector (FDD1)	75
B.21	Parallel port connector (LPT1).....	76
	Table B.21: Parallel port connector (LPT1)	76
B.22	IDE connector (IDE1).....	77
	Table B.22: IDE connector (IDE1)	77
B.23	Serial ATA (SATA1/SATA2/SATA3)	78
	Table B.23: Serial ATA (SATA1/SATA2/SATA3).....	78
B.24	HW Monitor Alarm (JOBS1).....	78
	Table B.24: Serial ATA (SATA1/SATA2/SATA3).....	78
B.25	LVDS VBR selection (JVBR1)	79
	Table B.25: LVDS VBR selection (JVBR1).....	79
B.26	LVDS panel power selection (JLVDS1)	79
	Table B.26: LVDS panel power selection (JLVDS1).....	79
B.27	Watchdog timer output selection (JWDT1)	79
	Table B.27: Watchdog timer output selection (JWDT1).....	79
B.28	CMOS clear (CMOS1)	80
	Table B.28: CMOS clear (CMOS1).....	80
B.29	System I/O Ports.....	80
	Table B.29: System I/O ports.....	80
B.30	DMA Channel Assignments	81
	Table B.30: DMA channel assignments.....	81
B.31	Interrupt Assignments	81
	Table B.31: Interrupt assignments.....	81
B.32	1st MB Memory Map	82
	Table B.32: 1st MB memory map	82

Appendix C Programming the GPIO 83

C.1	Supported GPIO Register	84
C.1.1	GPIO Registers.....	84
C.1.2	GPIO Example Program-1	85

Chapter 1

Hardware
Configuration

1.1 Introduction

PCA-6782 is an Intel® Atom™ dual-core D525 / fanless N455 CPU based ISA-interface half-size single board computer. With high performance Atom D525 dual-core computing power, it is ideal for intense data or graphic processing applications; with fanless Atom™ N455 CPU, it has ultra high reliability to resist heat, dust, vibration and shock in any application environment.

PCA-6782 is designed with an Intel® Atom™ D525/N455 CPU and ICH8M I/O control hub. The Atom™ D525 dual core CPU brings new generation computing capability into the half-size SBC application field. Compact size, low power consumption (Total power consumption ≤ 17.62 W) and dual-core parallel computing power and maximum 2 GB of DDR2 667 MHz memory capacity makes the PCA-6782D a powerful small form-factor computer platform for modern industrial applications that require high computing power. The fanless Atom™ N455 CPU (Total power consumption ≤ 12.56 W) is ideal for data-acquisition, environment monitoring system and factory automation that requires no air flow environments.

PCA-6782 has an integrated graphic core of Intel Embedded Gen3.5+ graphic technology with 224 MB shared memory. This feature makes PCA-6782 is capable of handling complex and intense 2D/3D graphic processing without an add-on graphic card; its VGA and LVDS dual video outputs also makes it suitable for applications requiring dual display or digital panel display capabilities.

PCA-6782 is rich in I/O interfaces: it has three SATA ports (300 MB/sec) for mainstream SSD (solid state disk), HDD, and ODD connections, one legacy IDE port for the ODD connection. It also has a CF socket to support an economical, easy-to-maintain SSD device. Additionally, the two serial ports (COM ports) can be used as reliable legacy device control interfaces. Users can also purchase Advantech's COM port upgrade module (P/N: PCA-COM485-00A1E) to have four extra RS485 ports with auto flow control capability.

In addition to board-level products, Advantech also offers a series of small form-factor wall-mount and rack-mount chassis; with PCA-6782 joining the product portfolio, Advantech now can provide whole, new, compact-sized, high-reliability, system-level solutions for industrial customers. With outstanding performance and reliability, and flexible expansion capability, PCA-6782 is an ideal computing platform for modern industrial applications.

1.2 Features

- Ultra low power (Total Power Consumption ≤ 12.56 W), fanless N455 CPU and maximum 2 GB DDR2 667 memory (Only for N SKU)
- Dual-core D525 CPU and maximum 2 GB DDR2 667 memory (Only for D SKU)
- Intel® Embedded Gen3.5+ graphics core with 224 MB of shared memory with VGA/LVDS dual video outputs (supporting clone and extension modes)
- Supports single-Gigabit Ethernet LANs with teaming capability
- Supports Embedded Software SUSI APIs and Utilities. (SUSI APIs: watchdog, hardware monitor, brightness control, programmable GPIO, backlight On/Off; Utilities: BIOS flash, eSOS (Requires BIOS Customization), system monitoring, Flash Lock, software protection)

1.3 Specifications

1.3.1 System

- **CPU:** Soldered-down (BGA type) Intel® Atom™ 1.8 GHz D525 dual-core CPU or 1.66GHz N455 fanless CPU
- **L2 Cache:** CPU built-in 1 MB / 512 KB L2 cache
- **BIOS:** AMI BIOS
- **System Chipset:** Intel® ICH8M
- **SATA/EIDE hard disk drive interface:** Supports up to 3 independent Serial ATA hard drives (up to 300 MB/s) as well as one IDE port (maximum 2 devices)
- **Floppy disk drive interface:** Supports up to two floppy disk drives, 5¹/₄ (360 KB and 1.2 MB) and/or 3¹/₂ (720 KB, 1.44 MB). BIOS enabled/disabled.

1.3.2 Memory

- **RAM:**
 - N and D SKU: Maximum 2 GB DDR2 667 MHz memory in SO-DIMM socket

Note! *PCA-6782 is ONLY compatible with DDR2 memory modules that are assembled with x16 (16-bit) memory chips and NOT compatible with those that are assembled with x8 (8-bit) memory chips. Using wrong memory modules may cause unexpected system instability.*



1.3.3 Input/Output

- **Enhanced parallel port:** Configurable to LPT1 or disabled. Standard DB-25 female connector provided. Supports EPP/ECP
- **Serial ports:** Two dedicated serial RS-232 ports on board, plus four ports RS-422/485 w/ autoflow control by module (Optional, Advantech P/N: PCA-COM485-00A1E)
- **Keyboard and PS/2 mouse connector:** One 6-pin mini-DIN connector is located on the mounting bracket for easy connection to a keyboard or PS/2 mouse. An on board keyboard pin header connector is also available
- **High Definition Audio:** PCA-6782 can provide audio function with the optional audio extension module PCA-AUDIO-HDA1E
- **USB ports:** PCA-6782 supports up to 8 USB 2.0 ports with transmission rates up to 480 Mbps

1.3.4 Graphic interface

- **Controller:** Integrated graphics core of Embedded Gen3.5+ technology
- **VRAM:** 224 MB shared system memory
- **Output Interfaces:**
 - VGA: Supports up to SXGA 1400 x 1050 @ 60Hz for Atom N455, up to 2048 x 1536 @ 60 Hz for Atom D525
 - LVDS: Supports 18-bit single channel and up to WXGA 1366 x 768 or 1280 x 800 for both Atom D525 and N455 CPUs
 - Dual Display: VGA + LVDS, supports extended mode and clone mode

1.3.5 Ethernet LAN

- Supports single 10/100/1000 Mbps Ethernet networking
- **Controller:** Intel® 82567V

1.3.6 Industrial features

- **Watchdog timer:** Can generate a system reset. The watchdog timer is programmable, with each unit equal to one second or one minute (255 levels). You can find programming details in Appendix A
- Fanless N455 CPU for N SKU for ultra high reliability and long MTBF

1.3.7 Mechanical and environmental specifications

- **Operating temperature:** 0 ~ 60° C (32 ~ 140° F)
- **Storage temperature:** -40 ~ 85° C (-40 ~ 185° F)
- **Humidity:** 20 ~ 95% non-condensing
- **Demanded Power supply voltage:** +12 V, +5 V, +5 VSB
- **Power consumption:**
 - **D SKU:**
 - CPU:** Dual-core Atom D525 CPU 1.8 GHz
 - Memory:** 1 Piece of 2 GB DDR2 667 MHz SO-DIMM
 - Storage:** One SATA HDD
 - Test program:** Hot CPU pro 4.22
 - +12 V: 0.46 A
 - +5 V: 2.41 A
 - +3.3 V: 0 A
 - +5 VSB: 0.01 A
 - 12 V: 0 A
 - 5 V: 0 A
 - Total Power Consumption: 17.62 W
 - **N SKU:**
 - CPU:** Single Core Atom N455 CPU 1.66 GHz
 - Memory:** 1 Piece of 2 GB DDR2 667 MHz SO-DIMM
 - Storage:** One STA HDD
 - Test Program:** Hot CPU pro 4.22
 - +12 V: 0.13 A
 - +5 V: 2.19 A
 - +3.3 V: 0 A
 - +5 VSB: 0.01 A
 - 12 V: 0 A
 - 5 V: 0 A
 - Total Power Consumption:** 12.56 W
- **Board size:** 185 mm (L) x 122 mm (W) (7.3" x 4.8")
- **Board weight:** 0.225 Kg (weight of board)

1.4 Jumpers and Connectors

Connectors on the PCA-6782 single board computer link it to external devices such as hard disk drives and a keyboard. In addition, the board has a number of jumpers used to configure your system for your application.

Below, Tables 1.1 and 1.2 list the jumper and connector functions. Later sections in this chapter give instructions on setting jumpers. Chapter 2 gives instructions for connecting external devices to your single board computer.

Table 1.1: Jumper descriptions

Label	Function
CMOS1	CMOS Clear
JWDT1	Watchdog timer output option
JLVDS1	LVDS panel power selection
JVBR1	LVDS VBR selection

Table 1.2: Connector descriptions

Label	Function
IDE1	Primary IDE connector
FDD1	Floppy drive connector
LPT1	Parallel port
VGA1	VGA connector
LVDS1	LVDS Pin-header
COM1	Serial port: COM1; RS232 (9-pin D-sub)
COM2	Serial port: COM2; RS-232 (14-pin 2.00 pitch box header)
KBMS1	PS/2 keyboard and mouse connector
KBMS2	External keyboard/mouse pin header
JIR1	Infrared port pin header
CPUFAN1	3-pin Atom D525 CPU fan connector
SYSFAN1	3-pin System fan connector
JFP1	Power and Reset Button connector
LAN1	Single Giga LAN RJ45 connector with Transformer
HDAUD1	High Definition Audio interface connector
SATA1	Serial ATA1
SATA2	Serial ATA2
SATA3	Serial ATA3
USB 12	USB port 1 and port 2 pin-header
USB 34	USB port 3 and port 4 pin-header
USB 56	USB port 5 and port 6 pin-header
USB 78	USB port 7 and port 8 pin-header
GPIO1	GPIO header
JOBS1	HW Monitor Alarm Close: Enable OBS Alarm Open: Disable OBS Alarm
PC1	PC104 connector
JCASE1	Case open
DIMMB1	Memory connector channel B

Table 1.2: Connector descriptions

INV1	LCD inverter connector
CF1	CF Socket
ATXF1	ATX feature connector
ATX1	ATX power connector
12V1	Negative power input connector
LPC1	Low pin count connector

1.5 Board Layout: Jumper and Connector Locations

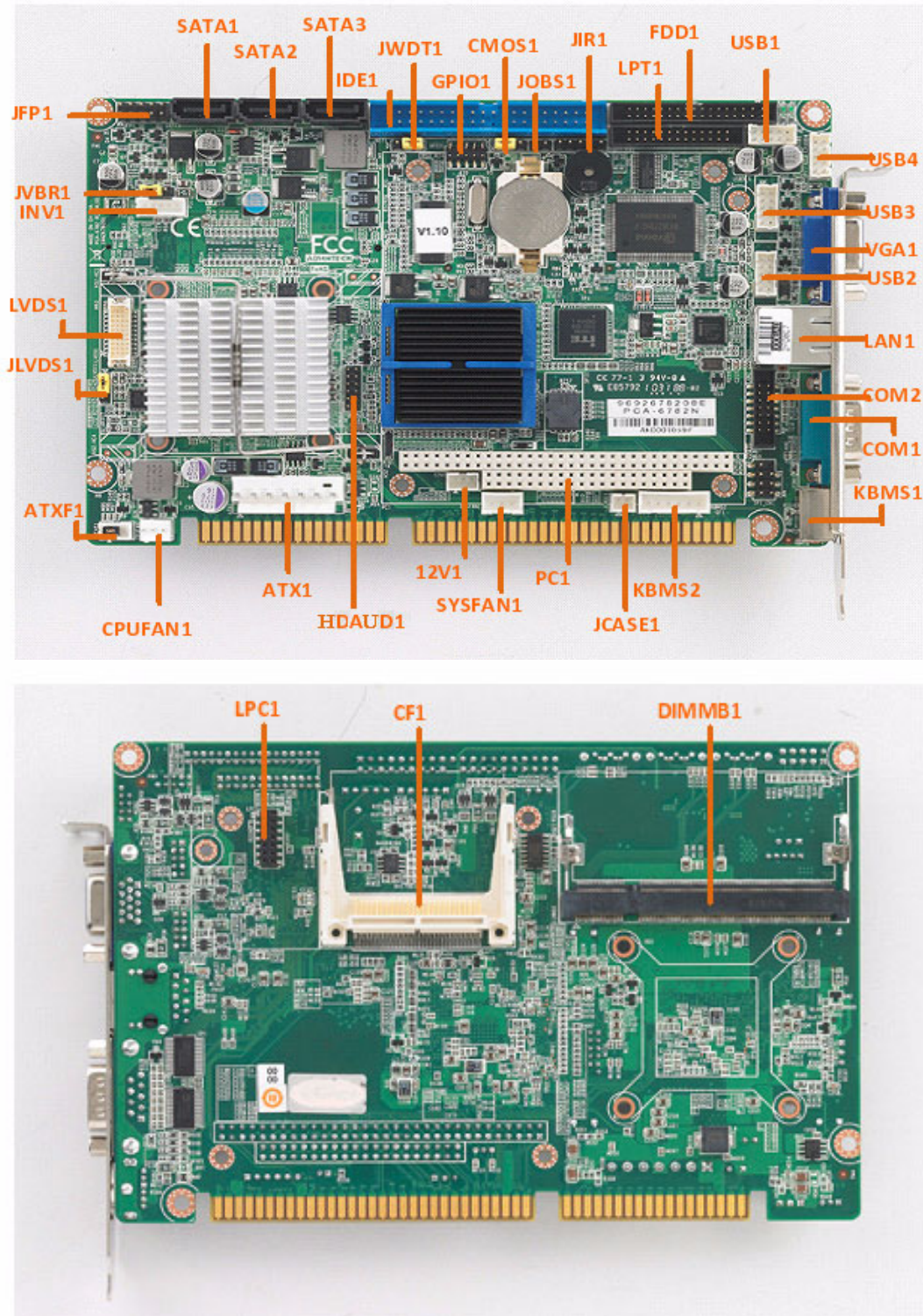


Figure 1.1 Board Layout

1.6 PCA-6782 Block Diagram

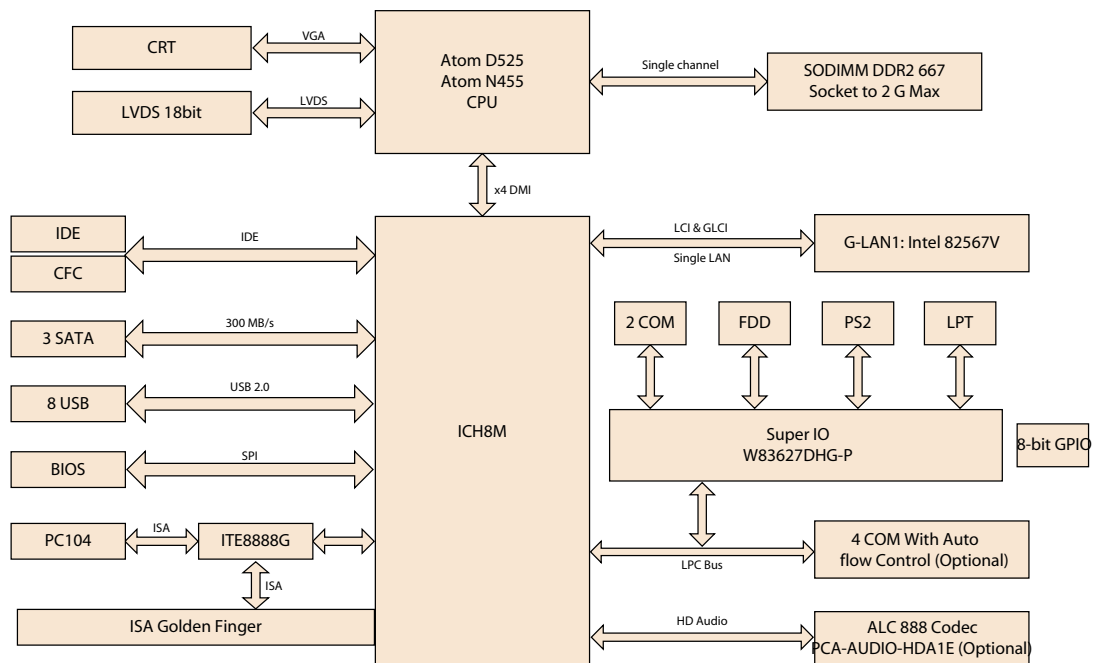


Figure 1.2 Block Diagram

1.7 Safety Precautions

Warning! Always completely disconnect the power cord from your chassis whenever you work with the hardware. Do not make connections while the power is on. Sensitive electronic components can be damaged by sudden power surges. Only experienced electronics personnel should open the PC chassis.



Caution! Always ground yourself to remove any static charge before touching the single board computer. Modern electronic devices are very sensitive to electrostatic discharges. As a safety precaution, use a grounding wrist strap at all times. Place all electronic components on a static-dissipative surface or in a static-shielded bag when they are not in the chassis.



Caution! The computer is provided with a battery-powered real-time clock circuit. There is a danger of explosion if battery is incorrectly replaced. Replace only with same or equivalent type recommended by the manufacturer. Discard used batteries according to manufacturer's instructions.



Note! Before installing your PCA-6782 into a chassis, make sure that no components on either side of the CPU card can touch any metal parts, especially the chassis wall and add-on card in the adjacent slot.

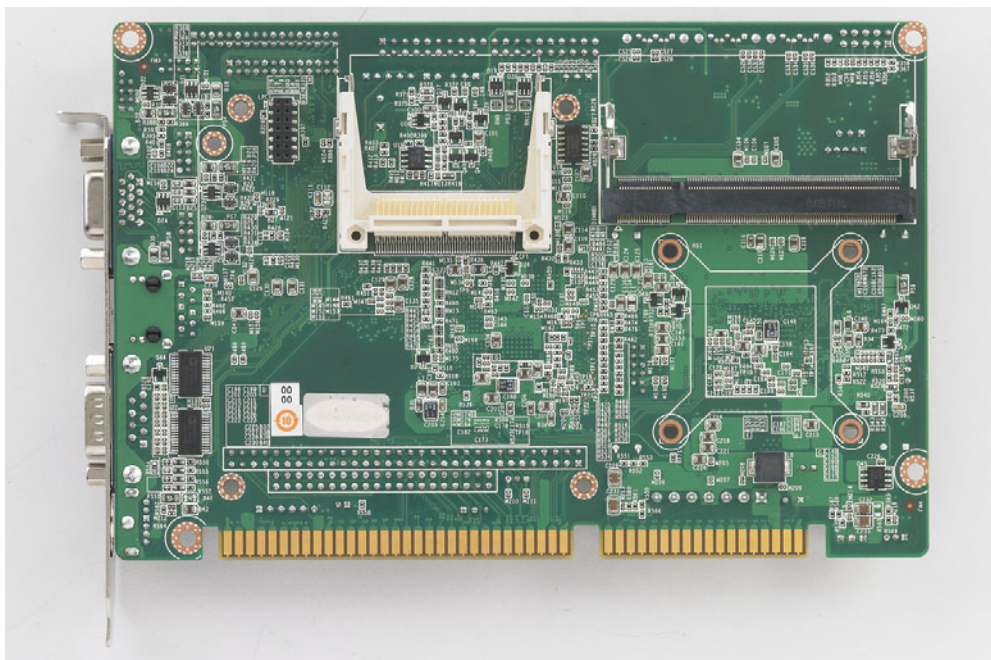


1.8 System Memory

The PCA-6782D has one SO-DIMM socket. PCA-6782 is ONLY compatible with DDR2 memory modules that are assembled with x16 (16-bit) memory chips and NOT compatible with those that are assembled with x8 (8-bit) memory chips. Using wrong memory modules may cause system instability and unexpected behavior.

1.9 Memory Installation Procedures

1. See picture below to locate DIMMB1 200-pin SODIMM socket.
2. A memory module and expansion socket are keyed. The plastic bridge in the socket must align with the notch in the module. The keyed bridge and notch make sure a SODIMM cannot be installed going the wrong direction.
3. Insert the SODIMM module into the socket at a 30-45 degree angle. Make sure the notch and the module are properly aligned. Slowly push down the SODIMM toward the CPU card PCB until the clips at each end of the expansion socket click into place.



1.10 Processor Installation

PCA-6782 series are equipped with soldered-down (BGA type) CPUs. no need for a user to install a CPU.

1.11 CPU Cooler Installation

Only PCA-6782D needs to have a CPU cooler installed by user (P/N: 1960046526N001), PCA-6782N does NOT require this; it already has a passive heat-sink assembled on the CPU card.

PCA-6782D users please follow the instructions below to install the CPU cooler which is included in the package.

First locate the Atom D525 CPU then put the metal plate included in CPU cooler package onto the solder side of the PCB with its four legs inserted into these four mounting holes around the CPU, then attach the CPU cooler onto the CPU card by fastening the four screws, one into each leg of the metal plate. Fasten the first screw loosely, then loosely engage the second screw diagonally across from the first one, then half fasten the third, and fourth screws. Finally snug all four screws completely, following the same order.

Warning! *Without a fan or heat sink, the CPU will overheat and cause damage to both itself and the single board computer. If you are a D SKU user, please install the CPU cooler (P/N: 1960046526N001) before booting up the system and do NOT remove any on-board passive heat sinks; if you are an N SKU user, please do NOT remove any on-board passive heat sinks.*



Improper CPU cooler installation may cause serious CPU die damage; please follow the instructions above to install your CPU cooler.

Chapter 2

Connecting
Peripherals & Jumper
Settings

2.1 Introduction

You can access most of the connectors from the top of the board while it is installed in the chassis. If you have a number of cards installed or have a packed chassis, you may need to partially remove the card to make all the connections.

You can configure your single board computer to match the needs of your application by setting the jumpers. A jumper is a metal bridge that closes an electrical circuit. It consists of two metal pins and a small metal clip (often protected by a plastic cover) that slides over the pins to connect them. To "close" (or turn ON) a jumper, you connect the pins with the clip. To "open" (or turn OFF) a jumper, you remove the clip.

Sometimes a jumper consists of a set of three pins, labeled 1, 2, and 3. In this case, you connect either pins 1 and 2, or 2 and 3. A pair of needle-nose pliers may be useful when setting jumpers.

2.2 IDE Connector (IDE1)

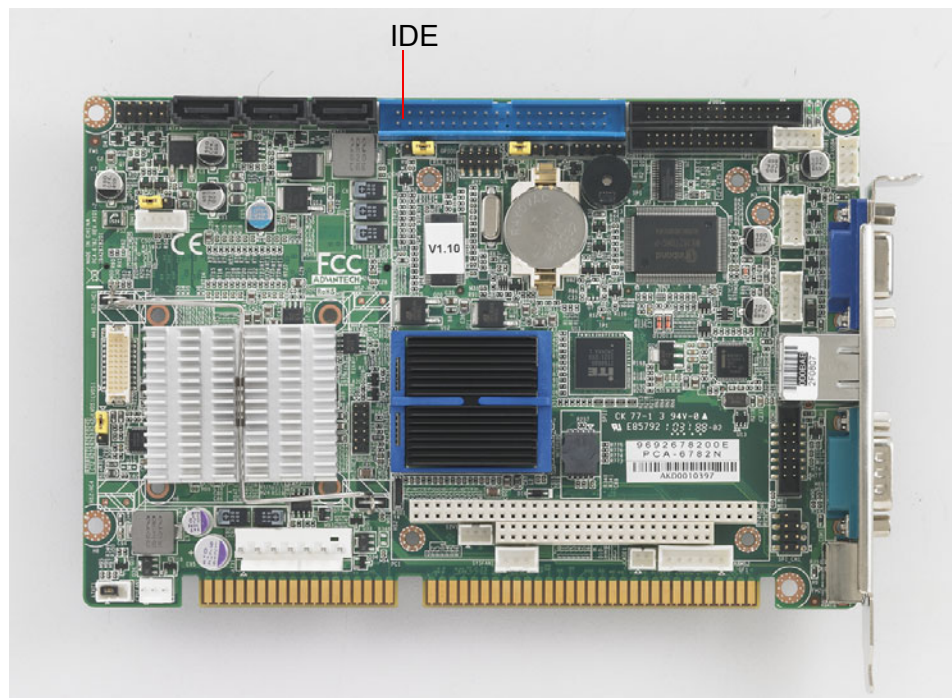


Figure 2.1 PCA-6782 IDE1 location

You can attach up to two IDE (Integrated Drive Electronics) drives to the PCA-6782's built-in controller. The primary connector can accommodate two drives.

Wire number 1 on the cable is red or blue and the other wires are gray. Connect one end to connector IDE1 on the single board computer. Make sure that the red/blue wire corresponds to pin 1 on the connector (in the upper right hand corner). See Chapter 1 for help finding the connector.

Unlike floppy drives, IDE hard drives can connect in either position on the cable. If you install two drives to a single connector, you will need to set one as the master and the other as the slave. You do this by setting the jumpers on the drives. If you use just one drive per connector, you should set each drive as the master. See the documentation that came with your drive for more information.

Connect the first hard drive to the other end of the cable. Wire 1 on the cable should also connect to pin 1 on the hard drive connector, which is labeled on the drive circuit board. Check the documentation that came with the drive for more information.

2.3 Floppy Drive Connector (FDD1)

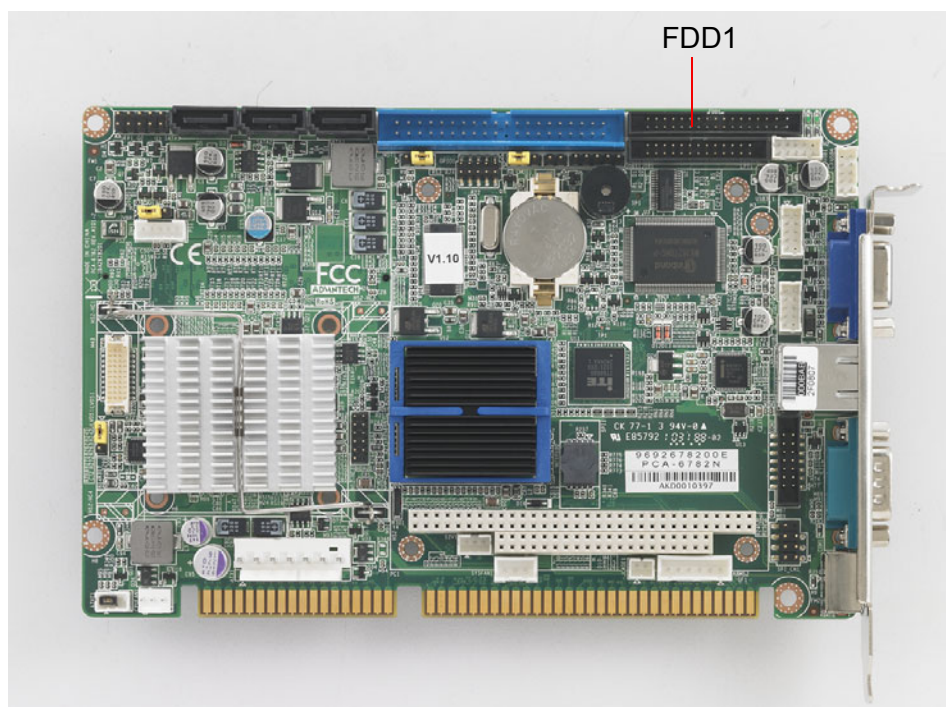


Figure 2.2 PCA-6782 FDD1 location

You can attach one floppy disk drives to the PCA-6782's on board controller. You can use 3.5" (720 KB, or 1.44 MB) drives.

The single board computer comes with a 34-pin daisy-chain drive connector cable. On one end of the cable is a 34-pin flat-cable connector. On the other end are two sets of 34-pin flat-cable connector (usually used for 3.5" drives). The set on the end (after the twist in the cable) connects to the A: floppy drive. The set in the middle connects to the B: floppy drive.

2.4 Parallel Port (LPT1)

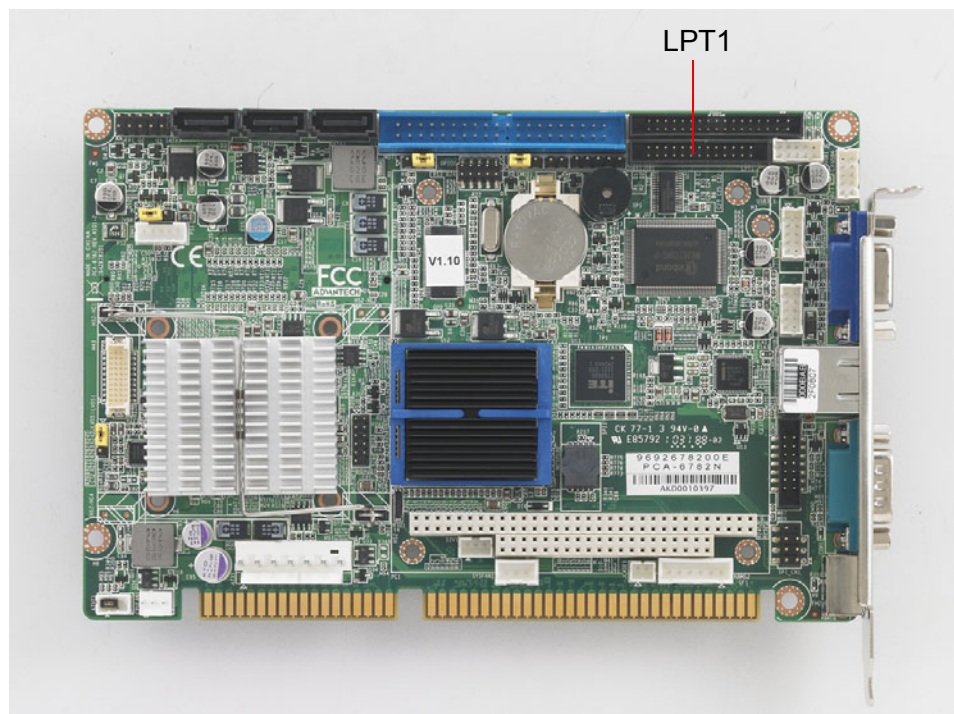


Figure 2.3 PCA-6782 LPT1 location

The parallel port is normally used to connect the single board computer to a printer. The PCA-6782 includes an onboard parallel port, accessed through a 26-pin flat-cable connector, LPT1. The card comes with an adapter cable which lets you use a traditional DB-25 connector. The cable has a 26-pin connector on one end and a DB-25 connector on the other, mounted on a retaining bracket. The bracket installs at the end of an empty slot in your chassis, giving you access to the connector.

The parallel port is designated as LPT1, and can be disabled or changed to LPT2 or LPT3 in the system BIOS setup.

To install the bracket, find an empty slot in your chassis. Unscrew the plate that covers the end of the slot. Screw in the bracket in place of the plate. Next, attach the flat-cable connector to LPT1 on the CPU card. Wire 1 of the cable is red or blue, and the other wires are gray. Make sure that wire 1 corresponds to pin 1 of LPT1. Pin 1 is on the upper right side of LPT1.

2.5 VGA Connector (VGA1)

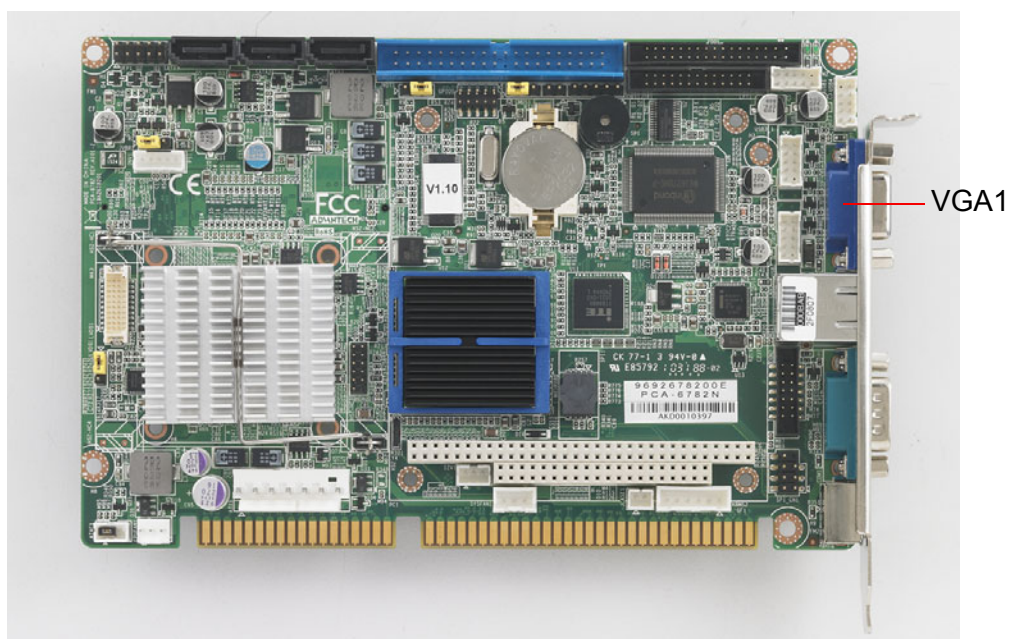


Figure 2.4 VGA Connector (VGA1)

The PCA-6782 includes a VGA interface that can drive conventional CRT displays. VGA1 is a standard 15-pin D-SUB connector commonly used for VGA. Pin assignments for CRT connector VGA1 are detailed in Appendix B.

2.6 Serial Ports (COM1, COM2)

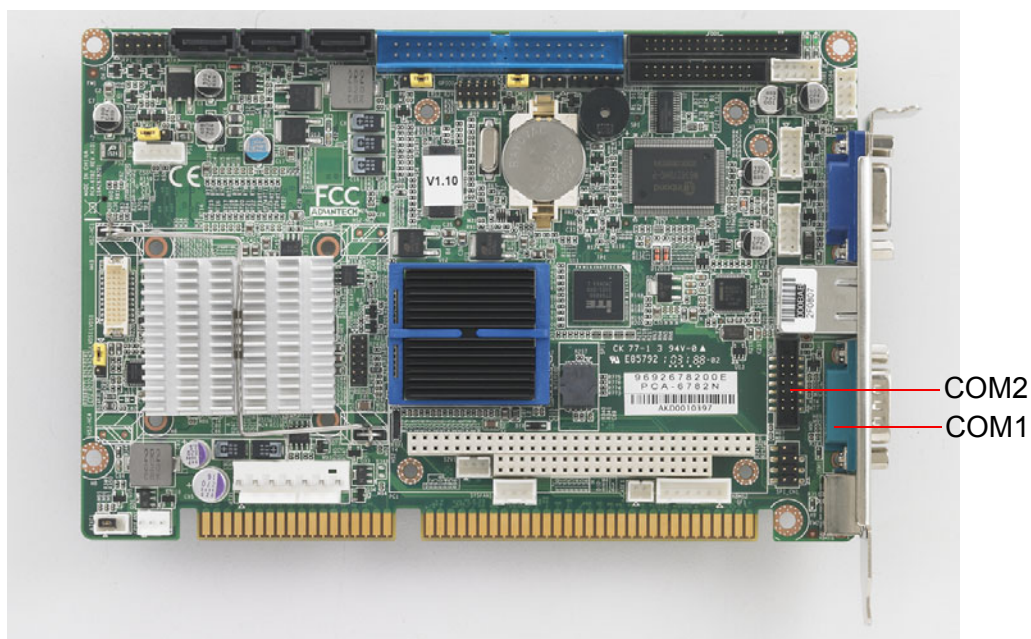


Figure 2.5 Serial Ports (COM1, COM2)

The PCA-6782 offers two serial ports: COM1 and COM2. These ports can connect to serial devices.

You may connect the dual COM ports cable kit 1700008762 to COM2 box-header to have these 2 DB9 RS232 ports on the rear bracket.

The IRQ and address ranges for all ports are fixed. However, if you want to disable the port or change these parameters later, you can do this in the system BIOS setup.

Different devices implement the RS-232 standard in different ways. If you are having problems with a serial device, be sure to check the pin assignments for the connector.

2.7 PS/2 Keyboard/Mouse Connector (KBMS1)

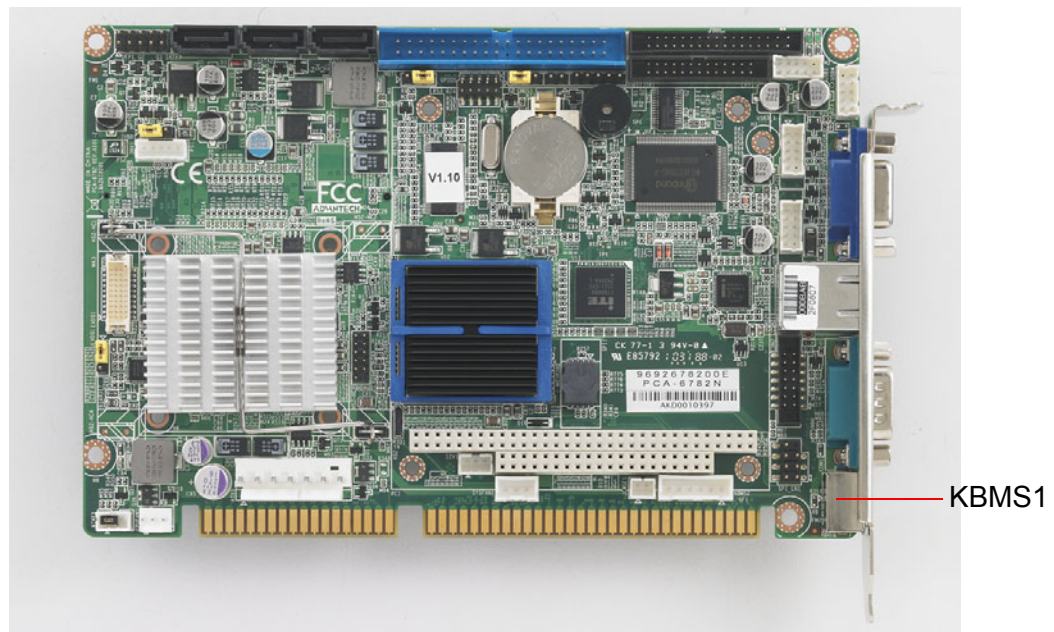


Figure 2.6 PS/2 Keyboard/Mouse Connector (KBMS1)

One 6-pin mini-DIN connector (KBMS1) on the card mounting bracket provides connection to a PS/2 keyboard or a PS/2 mouse, respectively. KBMS1 can also be connected to an adapter cable (P/N: 1700060202) for connecting to both a PS/2 keyboard and a PS/2 mouse.

2.8 External Keyboard Pin Header (KBMS2)

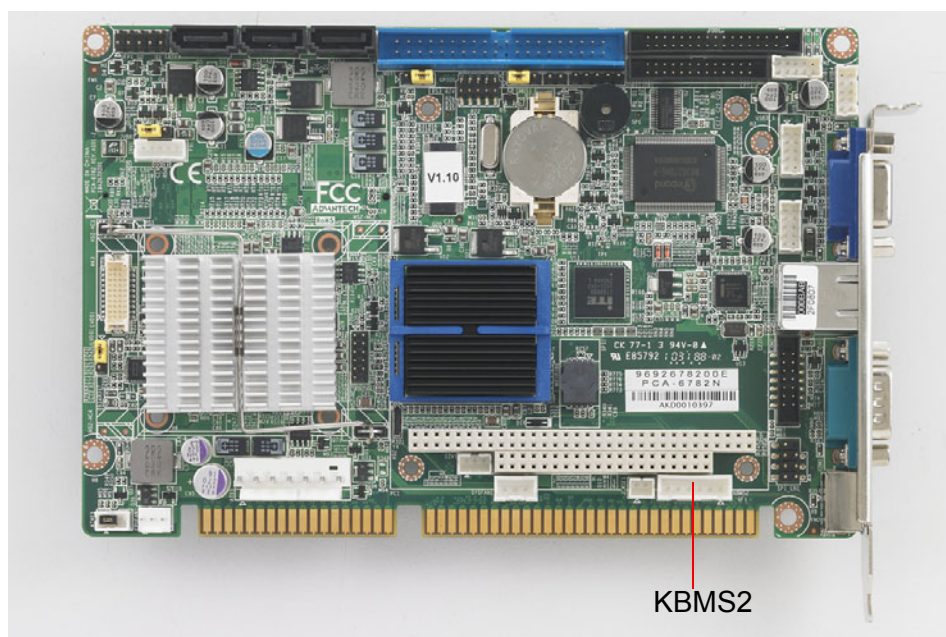


Figure 2.7 External Keyboard Connector (KBMS2)

In addition to the PS/2 mouse/keyboard connector on the PCA-6782's rear plate, there is also an extra onboard external keyboard pin header. This gives system integrators greater design flexibility.

2.9 CPU Fan Connectors (CPUFAN1)

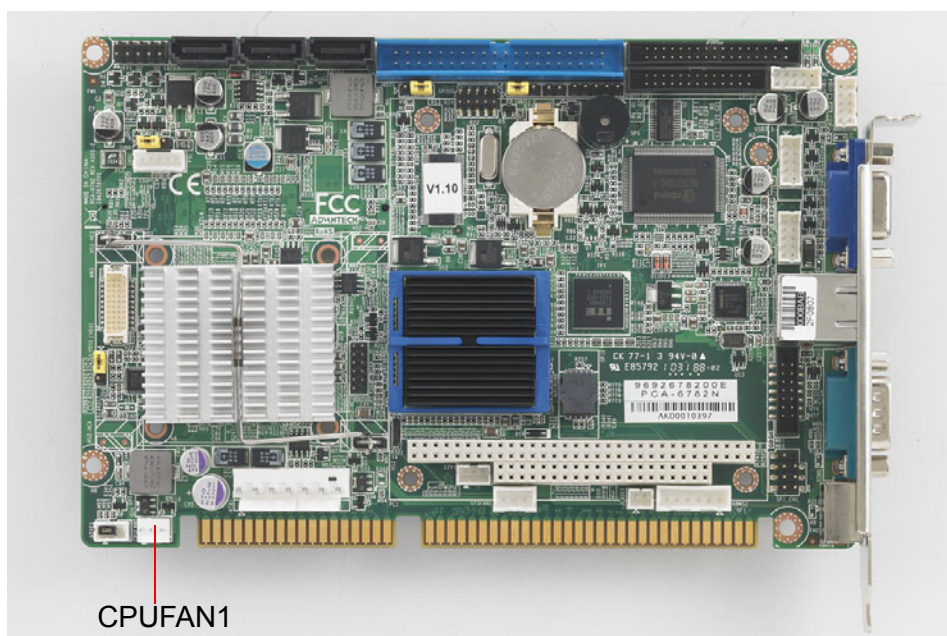


Figure 2.8 CPU Fan Connectors (CPUFAN1)

This connector supplies power and fan speed signal to PCA-6782D's proprietary CPU cooler for Atom D525 CPU.

2.10 Front Panel Connectors (JFP1)

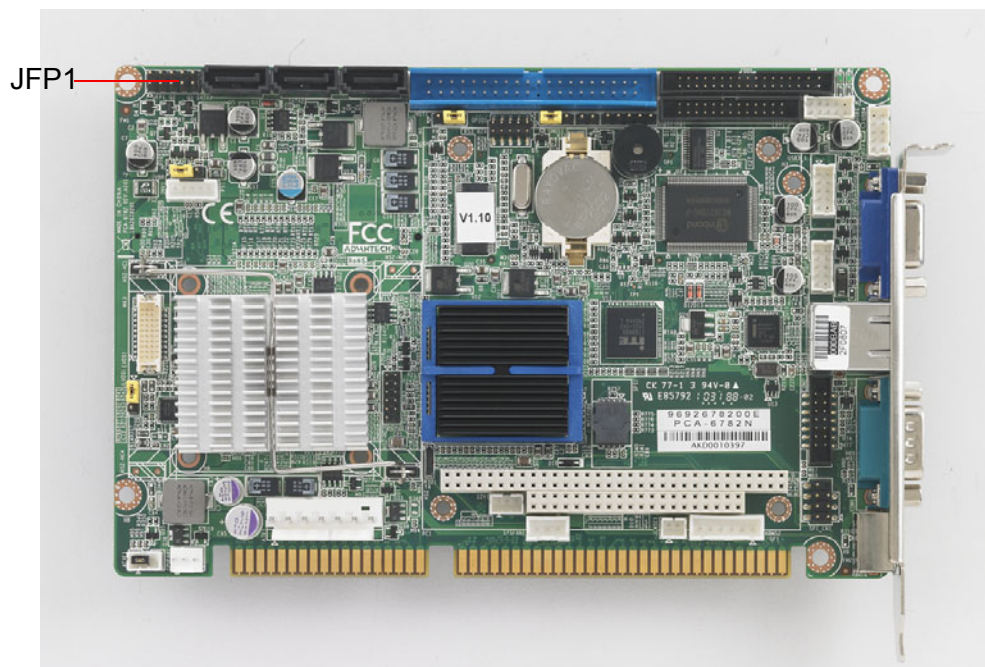


Figure 2.9 Front Panel Connectors (JFP1)

There are several external indicators and switches to help monitor and control the PCA-6782.

2.10.1 ATX Power Button (JFP1 Pin 9~10)

If your computer case is equipped with an ATX power supply, you should connect the power on/off button on your computer case to (JFP1 Pin 9~10). This connection enables you to turn your computer on and off.

2.10.2 Reset (JFP1 Pin 7~8)

Many computer cases offer the convenience of a reset button. Connect the wire for the reset button.

2.10.3 Suspend LED (JFP1 Pin 5~6)

You can connect an LED to connector (JFP1 Pin 5~6) to indicate when the system is in suspend status.

2.10.4 Power LED and keyboard lock connector (JFP1 Pin 3~4)

(JFP1 Pin 3~4) is a for the power on LED. Refer to Appendix B for detailed information on the pin assignments.

Table 2.1: ATX power supply LED status (No support for AT power)

Power mode	LED (ATX Power mode) (On/off by tentative button)	LED (AT Power mode) (On/off by switch of Power supply)	LED (AT Power mode) (On/off by front panel Switch)
System On	On	On	On
System Suspend	Fast flashes	Fast flashes	Fast flashes
System Off	Slow flashes	Off	Off

2.10.5 HDD LED (JFP1 Pin 1~2)

You can connect an LED to connector (JFP1 Pin 1~2) to indicate when the HDD is active.

2.11 Watch Dog Timer (JWDT1) / Infrared (JIR1)

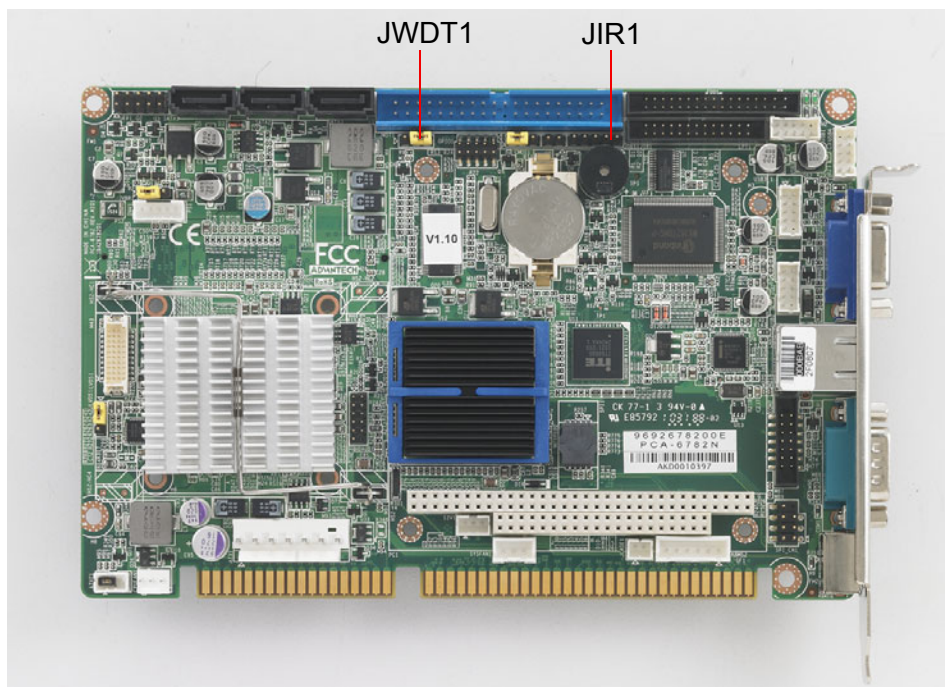


Figure 2.10 Watch Dog Timer (JWDT1) / Infrared (JIR1)

2.11.1 Watchdog timer output (JWDT1)

The PCA-6782 contains a watchdog timer that will reset the CPU in the event the CPU stops processing. This feature means the PCA-6782 will recover from a software failure or an EMI problem. The JWDT1 jumper settings control the outcome of what the computer will do in the event the watchdog timer is tripped.

Table 2.2: Watchdog timer output (JWDT1)

Function	Jumper Setting
IRQ11	1 - 2 closed
* System Reset	2 - 3 closed

* default setting

2.11.2 Infrared Connector (JIR1)

This 5-pin header is for connecting infrared device connector.

2.12 Single Giga LAN RJ45 connector (LAN1)

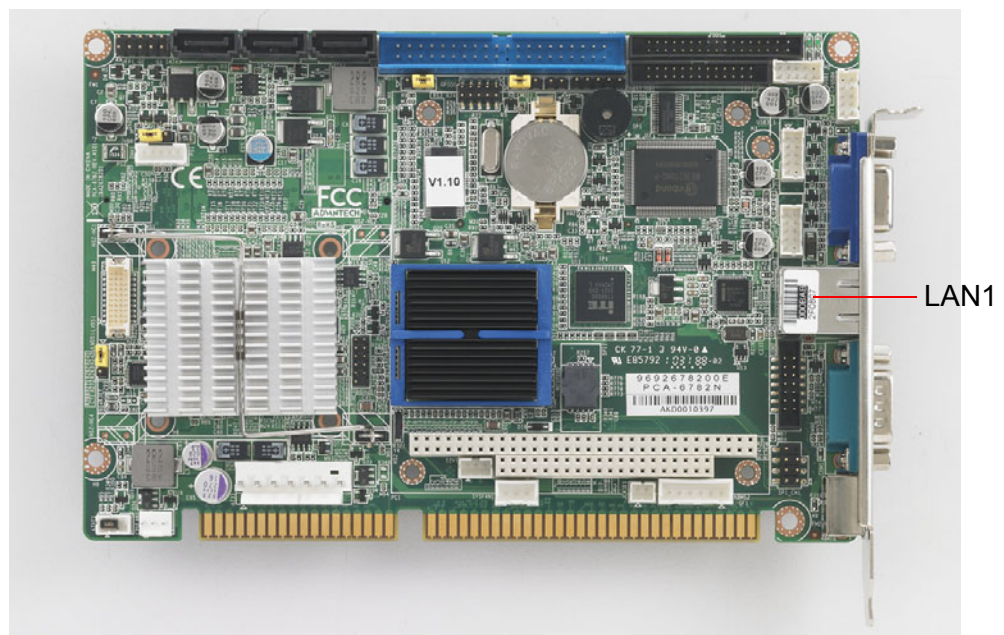


Figure 2.11 Single Giga LAN RJ45 connector (LAN1)

PCA-6782 uses the Intel® 82567V Gigabit LAN chips are linked to dedicated PCIe x1 lanes. PCA-6782 provide high throughputs for heavy loading networking environment. It provides one RJ-45 connectors in the rear side and is convenient for most industrial applications.

2.13 Serial ATA interface (SATA1 ~ SATA3)

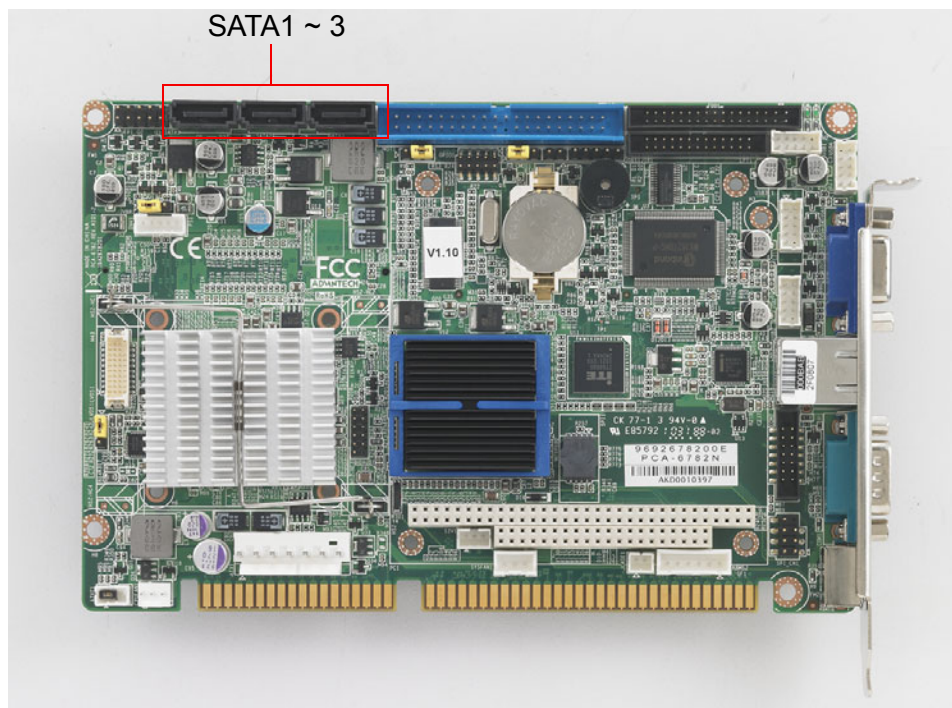


Figure 2.12 Serial ATA interface (SATA1 ~ SATA3)

In addition to the EIDE interface (up to two devices), the PCA-6782 features three high performance Serial ATA interfaces (up to 300 MB/s) for easy hard drive cabling with long, thin SATA cables.

2.14 GPIO header (GPIO1)

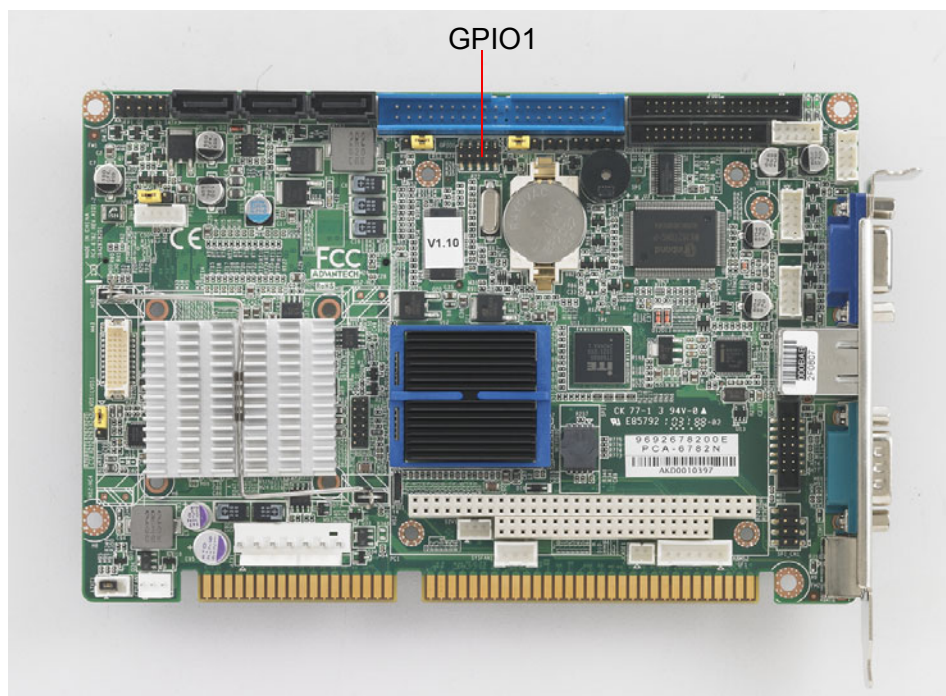


Figure 2.13 GPIO header (GPIO1)

PCA-6782 provides a 10-pin header for Digital I/O usage. Refer to Appendix B for detailed information on the pin assignments and programming guide in Appendix C.

2.15 LVDS panel power selection (JLVDS1)



Table 2.3: LVDS panel power selection (JLVDS1)

Pin	Function
1-2 (default)	+3.3 V*
2-3	+5 V

* default setting

2.16 LVDS VBR selection (JVBR1)



Table 2.4: LVDS VBR selection (JVBR1)

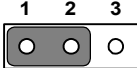
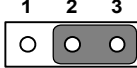
Ping	Function
1-2 *	Linear way to control brightness*
2-3	PWM to control brightness

* default setting

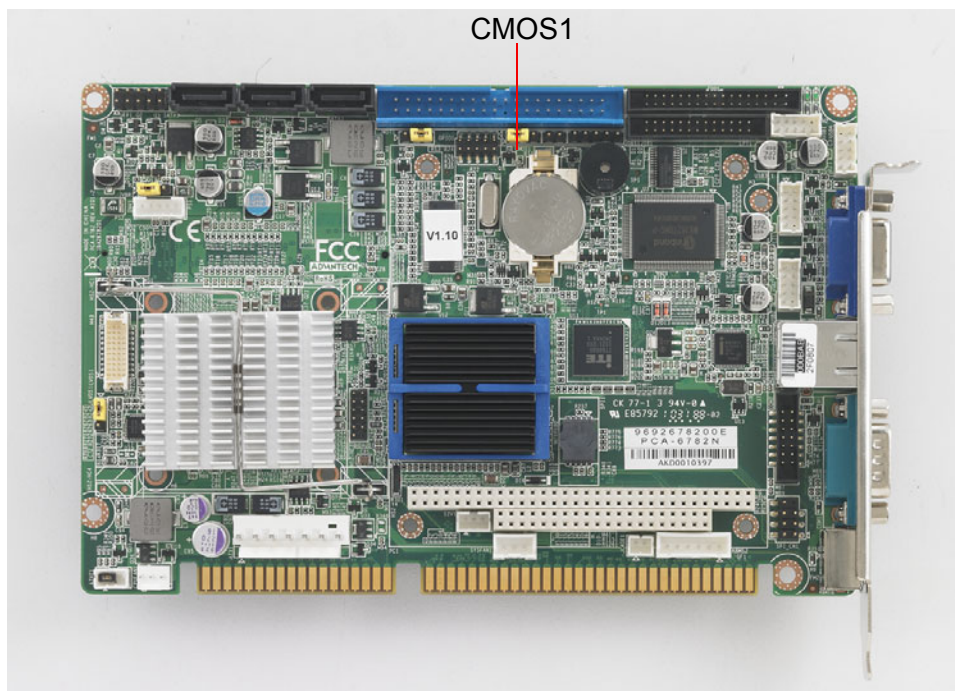
2.17 CMOS clear (CMOS1)

The PCA-6782 single board computer contains a jumper that can erase CMOS data and reset the system BIOS information. Normally this jumper should be set with pins 1-2 closed. If you want to reset the CMOS data, set CMOS1 to 2-3 closed for just a few seconds, and then move the jumper back to 1-2 closed. This procedure will reset the CMOS to its default setting.

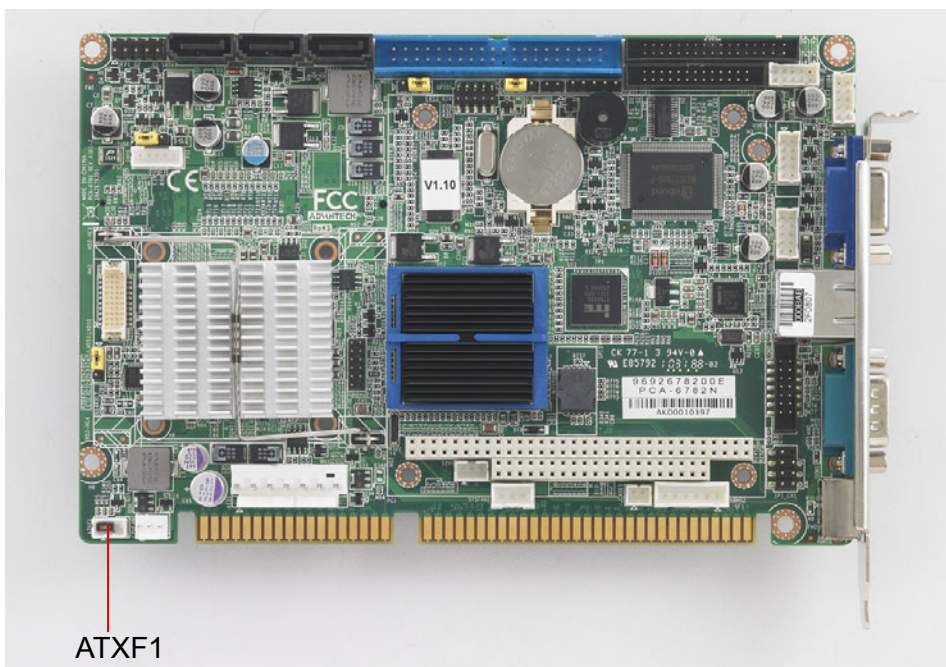
Table 2.5: CMOS (CMOS1)

Function	Jumper Setting
* Keep CMOS data	 1 - 2 closed
Clear CMOS data	 2 - 3 short

* default setting



2.18 ATX Feature connector(ATXF1)

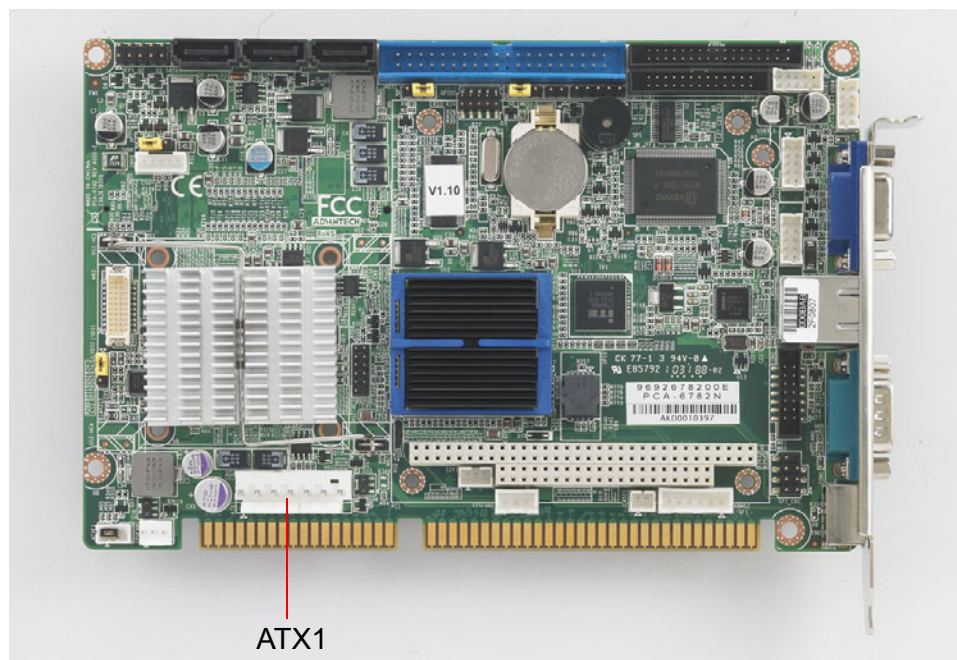


The PCA-6782 can support an advanced soft power switch function. When using an ATX power supply, please follow the instructions below to enable ATX functions.

1. Find ATX feature cable (1700002343).
2. Connect the 3-pin plug of the cable to ATXF1 (ATX feature connector). And connect another plug to backplane HCN1 connector.
3. Connect the power on/off button cable of the chassis to JPF1's pins 9 and 10. Default value is set ATXF1 to short pin1-2 to support AT power.

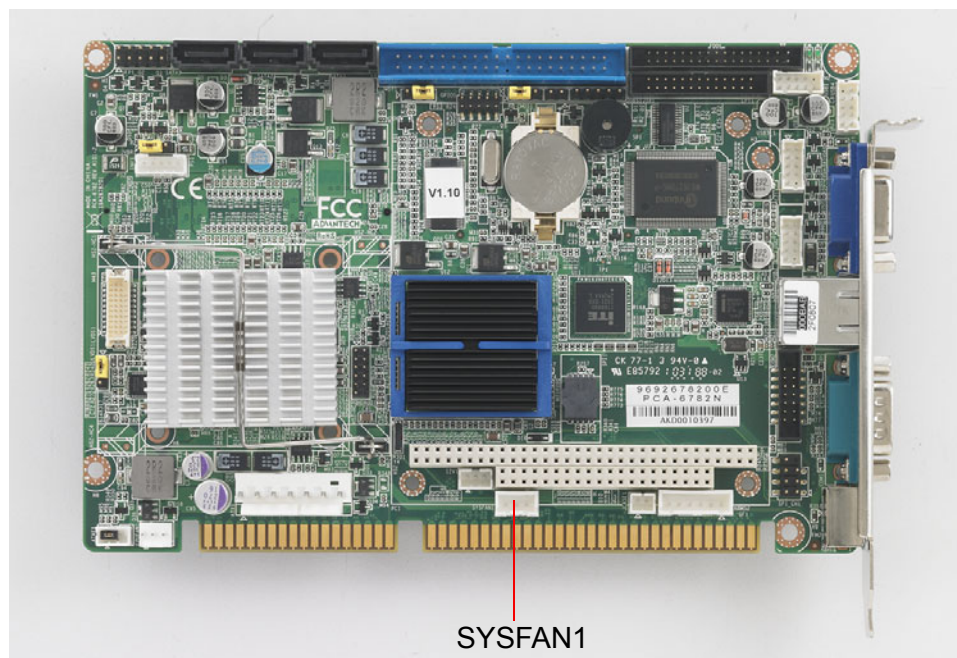
Important: Make sure that the ATX power supply can take at least a 10mA load on the 5 V standby lead (5 VSB). If not, you may have difficulty powering on your system.

2.19 ATX power control connector (ATX1)



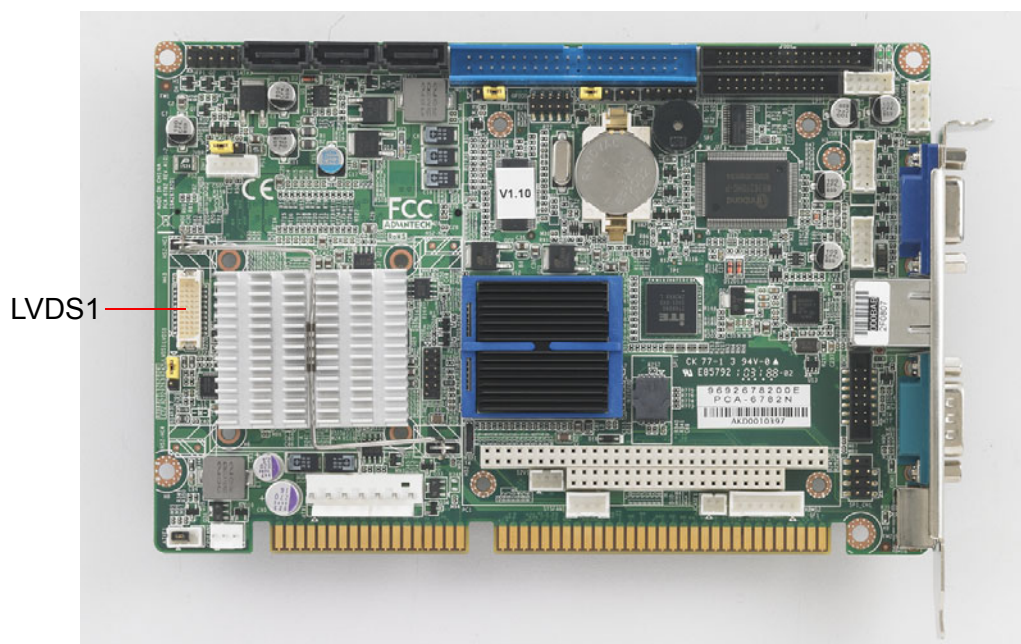
The PCA-6782 supports ATX power supply. ATX1 supplies main power (+5 V,+12 V, 5 VSB), and it is a 6 x 2 power connector.

2.20 System FAN connector (SYSFAN1)



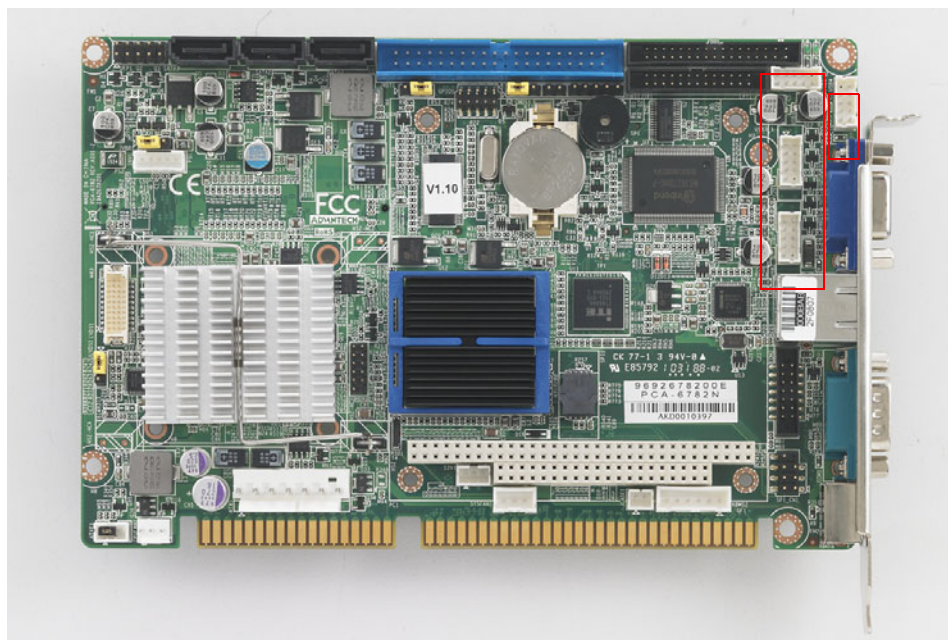
The PCA-6782 is equipped with a 3-pin FAN connector providing +12 V power for system FAN.

2.21 LVDS Signal and Power Connectors (LVDS1)



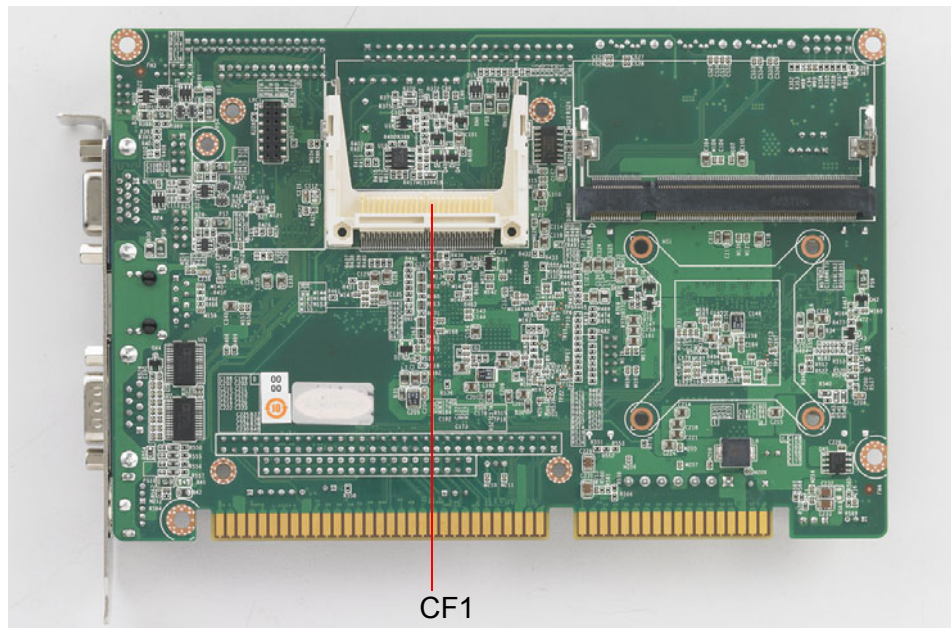
For PCA-6782, LVDS1 consists of a 20-pin connector which can support 18-bit single channel LVDS with resolution up to WXGA (1366 x 768 or 1280 x 800).

2.22 USB Ports (USB 1 ~ 8)



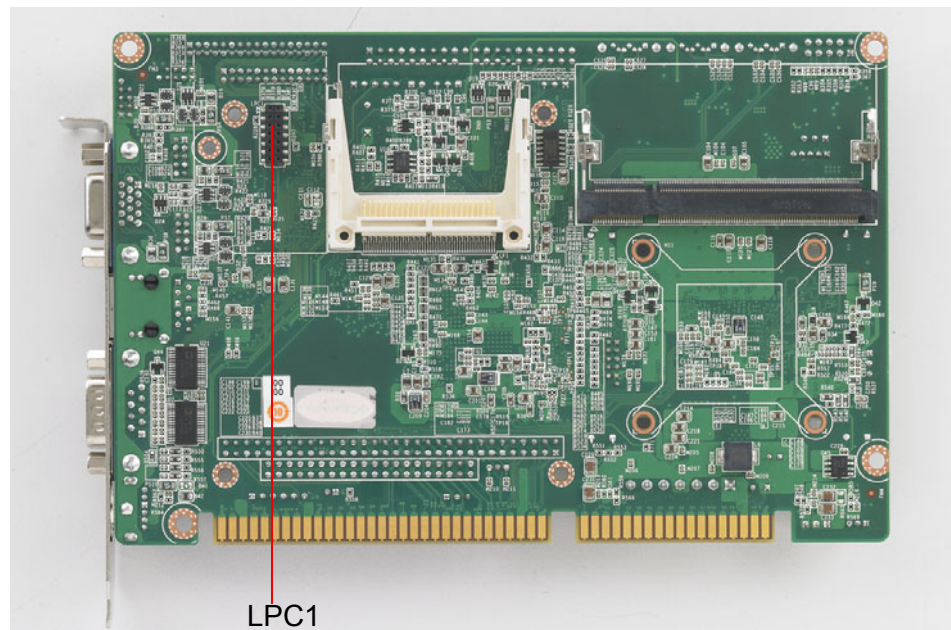
PCA-6782 supports 8 USB 2.0 ports, you may use the 1700008887 4-port USB cable kit to utilize any four of USB 1~8.

2.23 CF Card Socket



PCA-6782 supports a CF card device, an installed CF card will occupy the master IDE device. Please locate it on the solder side of the CPU card.

2.24 Low Pin Count Device Connection Pin Header



PCA-6782 has a 14-pin female pin header on its solder side to support Advantech COM port extension modules. You may purchase them to add 4 more RS-485 serial ports (COM ports) with auto flow control function. Please see ordering information below.

Part Number and Description:

PCA-COM485-00A1E: Four RS 422/485 COM module WITH auto flow control function.

Chapter 3

AMI BIOS Setup

AMI BIOS has been integrated into many many motherboards, and has been very popular for well over a decade. People sometimes refer to the AMI BIOS setup menu as BIOS, BIOS setup or CMOS setup.

With the AMI BIOS Setup program, you can modify BIOS settings and control the special features of your computer. The BIOS Setup program uses a number of menus for making changes and turning special features on or off. This chapter describes the basic navigation of the PCA-6782 setup screens.

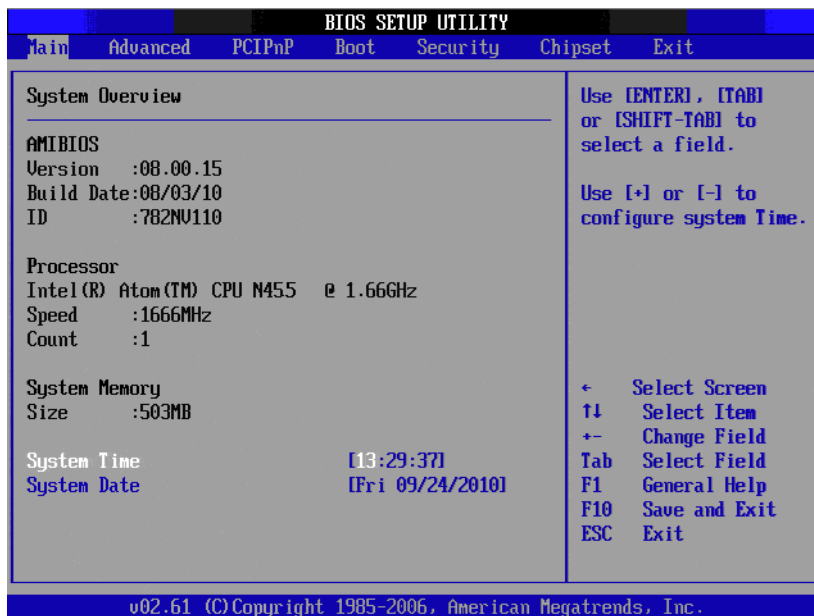


Figure 3.1 Setup Program Initial Screen

AMI's BIOS ROM has a built-in Setup program that allows users to modify the basic system configuration. This information is stored in battery-backed up CMOS and it is retained when the power is turned off.

3.1 Entering Setup

Press the "Del" key during the Power On Self Test (POST) process to enter the BIOS setup screen, otherwise the system will continue the POST process.

3.2 Main Setup

When you first enter the BIOS Setup Utility, you will enter the Main setup screen. You can always return to the Main setup screen by selecting the Main tab. There are two Main Setup options. They are described in this section. The Main BIOS Setup screen is shown below.

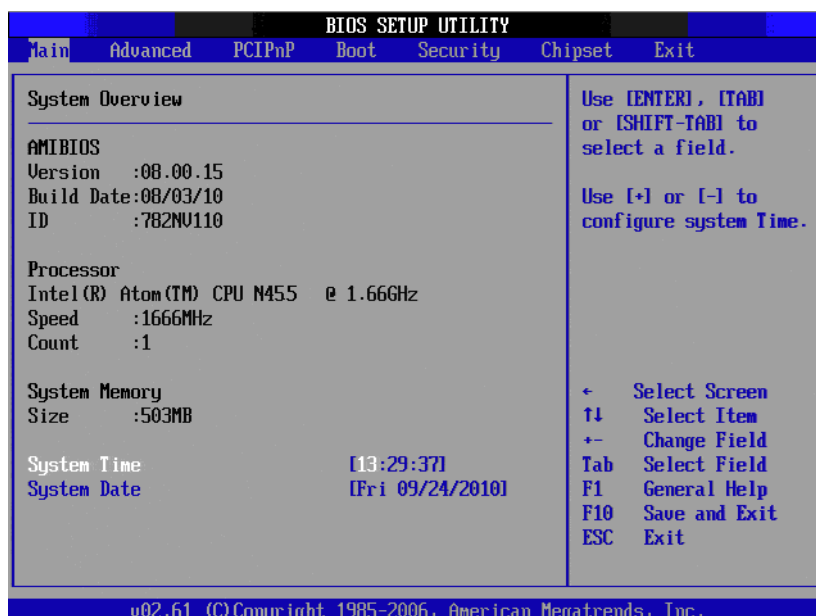


Figure 3.2 Main Setup Screen

The Main BIOS setup screen has two main frames. The left frame displays all the options that can be configured. Grayed-out options cannot be configured; options in blue can. The right frame displays the key legend.

Above the key legend is an area reserved for a text message. When an option is selected in the left frame, it is highlighted in white. Often a text message will accompany it.

3.2.1 System time / System date

Use this option to change the system time and date. Highlight System Time or System Date using the <Arrow> keys. Enter new values through the keyboard. Press the <Tab> key or the <Arrow> keys to move between fields. The date must be entered in MM/DD/YY format. The time must be entered in HH:MM:SS format.

3.3 Advanced BIOS Features Setup

Select the Advanced tab from the PCA-6782 setup screen to enter the Advanced BIOS Setup screen. You can select any of the items in the left frame of the screen, such as CPU Configuration, to go to the sub menu for that item. You can display an Advanced BIOS Setup option by highlighting it using the <Arrow> keys. All Advanced BIOS Setup options are described in this section. The Advanced BIOS Setup screen is shown below. The sub menus are described on the following pages.



Figure 3.3 Advanced BIOS Features Setup Screen

3.3.1 CPU Configuration

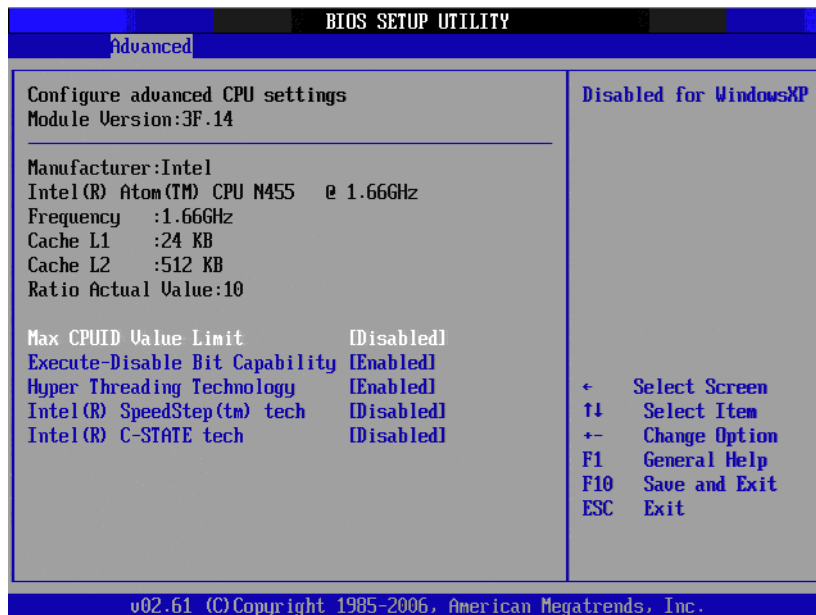


Figure 3.4 CPU Configuration Settings

- **Max CPUID Value Limit**
This is disabled for Windows XP.
- **Execute Disable Bit**
This item specifies the Execute Disable Bit Feature. The settings are Enabled and Disabled. The Optimal and Fail-Safe default setting is Enabled. If Disabled is selected, the BIOS forces the XD feature flag to always return to 0.
- **Hyper-Threading Technology**
While using a CPU with Hyper-Threading technology, you can select "Enabled" to enable Hyper-Threading Technology in an OS which supports Hyper-Threading Technology or select "Disabled" for other OSs which do not support Hyper-Threading technology.
- **Intel® SpeedStep™ tech**
Intel SpeedStep Technology centralizes the control mechanism in the processor, eliminating the need for coordination with the chipset during the frequency/voltage configuration. This option is used to enable/disable the GV3 bit.
- **Intel® C-STATE tech**
Intel® CPU Enhanced Halt (C1E) function, a function to save CPU power consumption in system halt state. When enabled, the CPU speed and voltage will be reduced during system halt state to save power consumption. You may choose to enable or disable it.

3.3.2 IDE Configuration



Figure 3.5 IDE Configuration

- **ATA/IDE Configuration**
This can be configured as Disabled or Enhanced.
- **Configure SATA as**
This can be configured as IDE or AHCI.
- **SATA1/SATA2/SATA3**
While entering setup, the BIOS automatically detects the presence of SATA devices. This displays the status of SATA device auto-detection.
- **IDE Master / Slave**
While entering setup, the BIOS automatically detects the presence of IDE devices. This displays the status of IDE device auto-detection.
- **AHCI Configuration**
AHCI is a new interface specification that allows the SATA controller driver to support advanced features. While entering setup, BIOS auto detects the presence of AHCI devices. This displays the status of auto detection of AHCI devices.

3.3.3 Super I/O Configuration

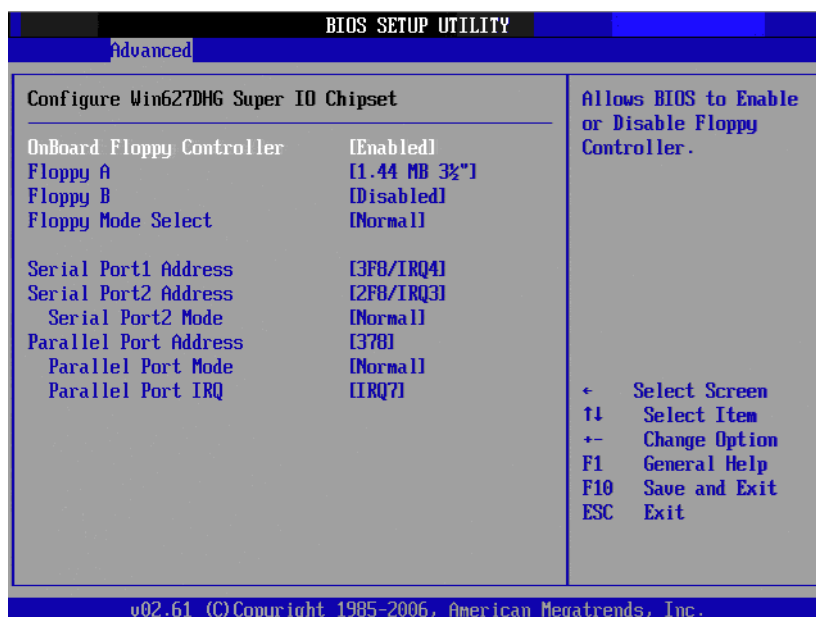


Figure 3.6 Super I/O Configuration

- **OnBoard Floppy Controller**
Enable or disable the floppy function.
- **Floppy A**
Select the type of floppy drive connected to the system. We suggest you disable the floppy if installing Windows Vista without a floppy drive.
- **Floppy B**
Select the type of floppy drive connected to the system.
- **Floppy Mode Select**
For user to set floppy mode, this must match specification of the floppy drive connected to CPU card, available options are 360 KB 5 1/4", 1.2 MB 5 1/4", 720 KB 3 1/2", 1.44 MB 3 1/2", 2.88 MB 3 1/2".
- **Serial Port1 Address**
This option configures serial port 1 base addresses.
- **Serial Port2 Address**
This option configures serial port 2 base addresses. The following options are also available:
 - Serial port2 Mode
This option configures serial port 2 mode. Available options include Normal, IrDA, ASK IR.
- **Parallel Port Address**
This configures parallel port base addresses. The following options are also available:
 - Parallel Port Mode
This option configures Parallel Port mode. Available options include Normal, Bi-directional, ECP, EPP, ECP & EPP.
 - Parallel Port IRQ
This option configures s Parallel Port base IRQ.

3.3.4 Hardware Health Function

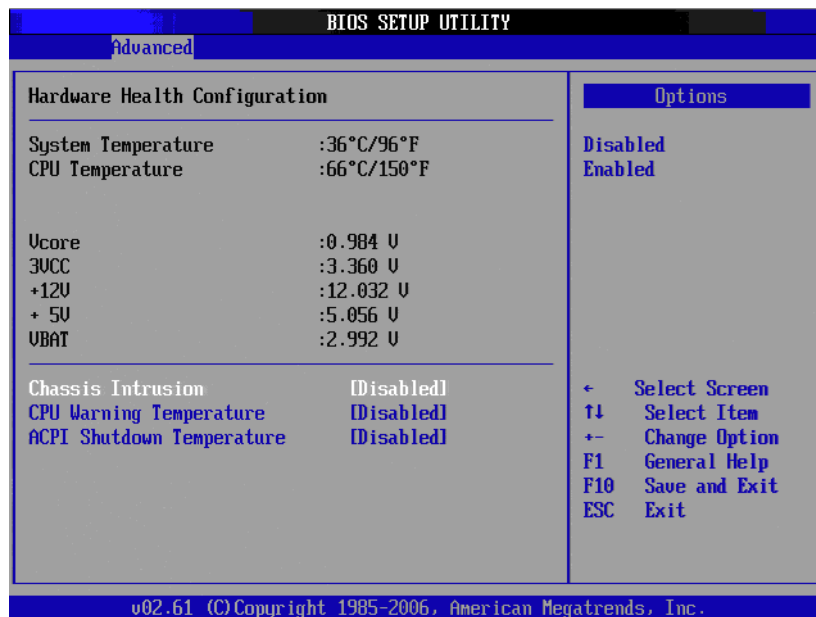


Figure 3.7 Hardware Health Configuration.

- **Hardware health function**
Enable/Disable the onboard hardware monitor controller. If this option is enabled, the BIOS and OBS utility can get the system board's health information from hardware monitor controller.
- **Chassis Intrusion**
Enable/Disable the Chassis Intrusion monitoring function. When the case is opened, the buzzer beeps.
- **CPU warning temperature**
Use this to set the CPU warning temperature threshold. When the system reaches the warning temperature, the buzzer will beep.
- **ACPI Shut Down Temperature**
This option allows user to set the CPU temperature at that the system will automatically shut down for preventing CPU from over heat damage.

3.3.5 APM Configuration

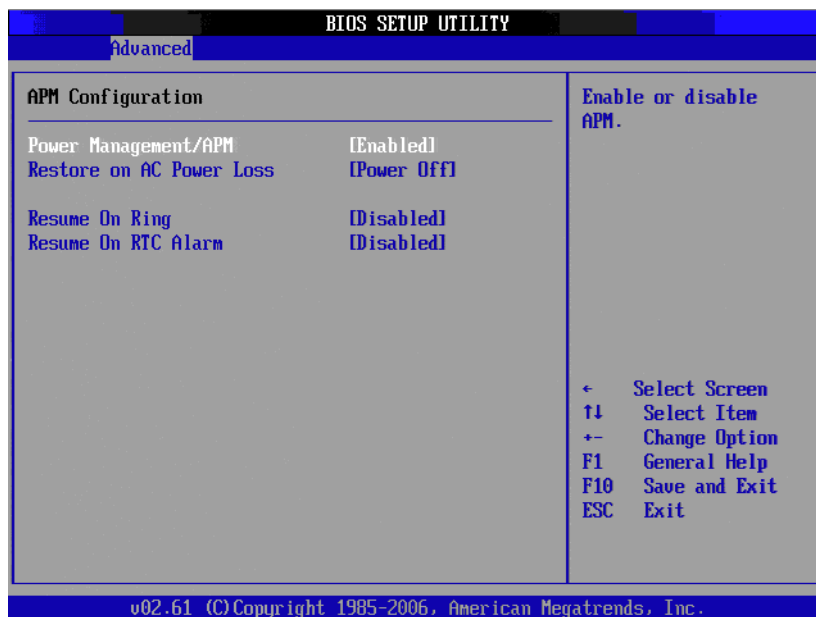


Figure 3.8 APM Configuration

- **Power Management/APM**
Enable or disable APM power management function.
- **Restore on AC Power Loss**
This option allows user to set system action when AC power restores after AC power loss. Available options include Power Off, Power On, Last Status.
- **Resume On Ring**
Disable/Enable RI wake event.
- **Resume On RTC Alarm**
Disable/Enable RTC wake event.

3.4 Event Logging Details

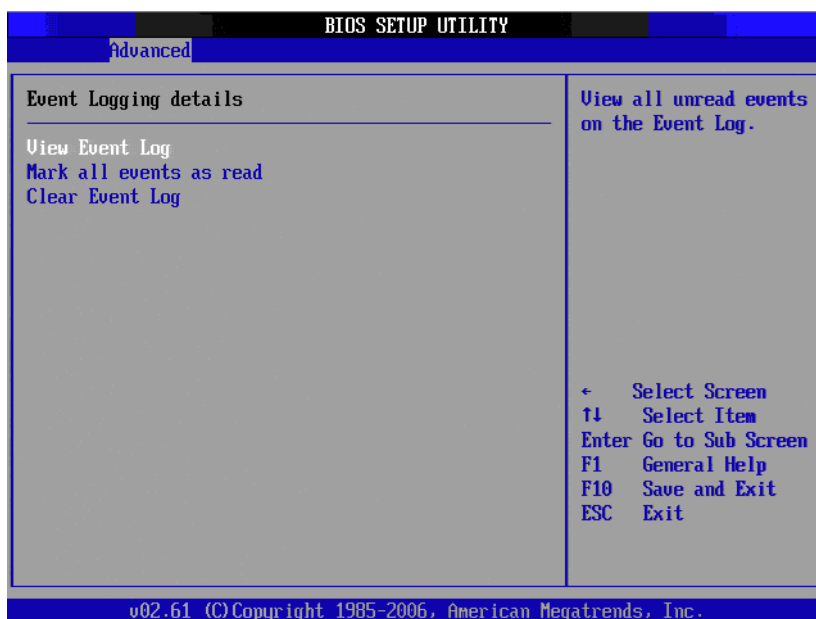


Figure 3.9 Event Logging Details

- View Event Log

3.5 USB Configuration

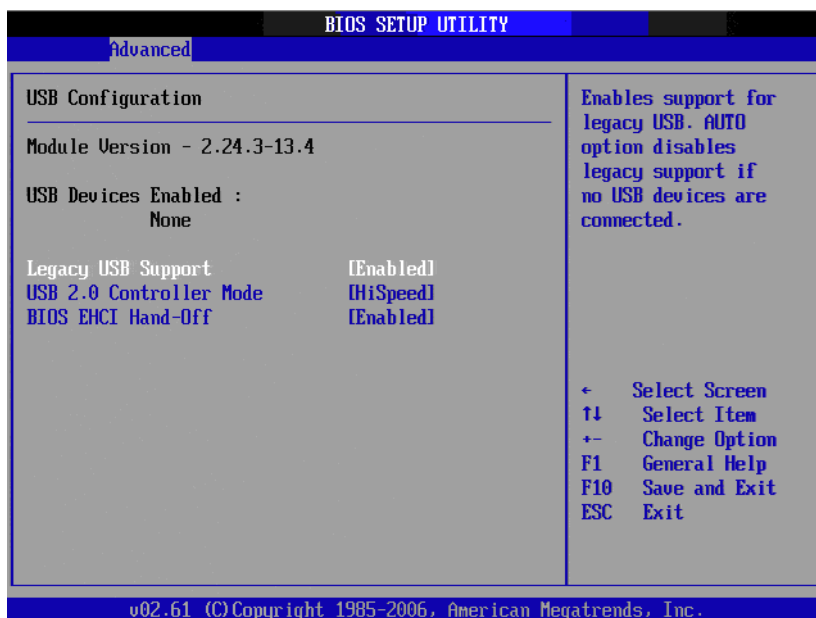


Figure 3.10 USB Configuration

3.6 PCI/PnP Setup

Select the PCI/PnP tab from the PCA-6782 setup screen to enter the Plug and Play BIOS Setup screen. Highlighting a Plug and Play BIOS Setup option by using the <Arrow> keys displays a description in the right-hand panel. All Plug and Play BIOS Setup options are described in this section. The Plug and Play BIOS Setup screen is shown below.



Figure 3.11 PCI/PnP Setup

- **Clear NVRAM**
Set this value to force the BIOS to clear the Non-Volatile Random Access Memory (NVRAM). The Optimal and Fail-Safe default setting is No.
- **Plug and Play O/S**
Set this value to allow the system to modify the settings for Plug and Play operating system support. The Optimal and Fail-Safe default setting is No.
- **PCI Latency Timer**
Use this to adjust the PCI Latency Timer. This option sets the latency of all PCI devices on the PCI bus. The Optimal and Fail-Safe default setting is 64.
- **Allocate IRQ to PCI VGA**
Set this value to allow or stop the system from giving the VGA adapter card an interrupt address. The Optimal and Fail-Safe default setting is Yes.
- **Palette Snooping**
Set this value to allow the system to modify the Palette Snooping settings. The Optimal and Fail-Safe default setting is Enabled.
- **PCI IDE BusMaster**
Set this value to allow or prevent the use of PCI IDE Busmastering. The Optimal and Fail-Safe default setting is enabled.
- **Off Board PCI/ISA IDE card**
Set this value to allow an add-on PCI/ISA IDE card to be selected. The Optimal and Fail-Safe default setting is Auto.

- **IRQ**
 - IRQ[3,4,5,7,9,10,11,14,15]:
Available: Specified IRQ is available to be used by PCI/PnP devices.
Reserved: Specified IRQ is reserved for use by Legacy ISA devices.
 - DMA Channel [0,1,3,5,6,7]:
 - Available: Specified DMA is available to be used by PCI/PnP devices.
Reserved: Specified DMA is reserved for use by legacy ISA devices.
Reserved Memory Size: Size of memory block to reserve for legacy ISA devices.

3.7 Boot Setup Utility



Figure 3.12 Boot Settings Configuration

The following options are available:

- **Quick Boot**
Allows the BIOS to skip certain tests while booting. This will decrease the time needed to boot the system.
- **Quiet Boot**
If this option is set to Disabled, the BIOS displays normal POST messages. If Enabled, an OEM Logo is shown instead of POST messages.
- **AddOn ROM Display Mode**
This is for choosing display mode of option ROM information under DOS environment during booting up process. Available options include Force BIOS, Keep Current.
- **Bootup Num-Lock**
Select the Power-on state for Numlock.
- **PS/2 Mouse Support**
Enable or disable PS/2 interface mouse support. Available options include Auto, Enable, Disable.
- **Wait For 'F1' If Error**
Wait for the F1 key to be pressed if an error occurs.

- **Hit 'DEL' Message Display**
Displays "Press DEL to run Setup" in POST.
- **Interrupt 19 Capture**
Enable or disable option ROM to trap interrupt 19.
- **Bootsafe function**
Enable or disable Advantech proprietary Bootsafe function. (only reserve this item. If need this function, need customize BIOS).

3.8 Security Setup



Figure 3.13 Password Configuration

Select Security Setup from the PCA-6782 Setup main BIOS setup menu. All Security Setup options, such as password protection and virus protection are described in this section. To access the sub menu for the following items, select the item and press <Enter>:

- **Change Supervisor Password**
Provides for either installing or changing the password.
- **Boot sector Virus protection:** The boot sector virus protection will warn if any program tries to write to the boot sector.

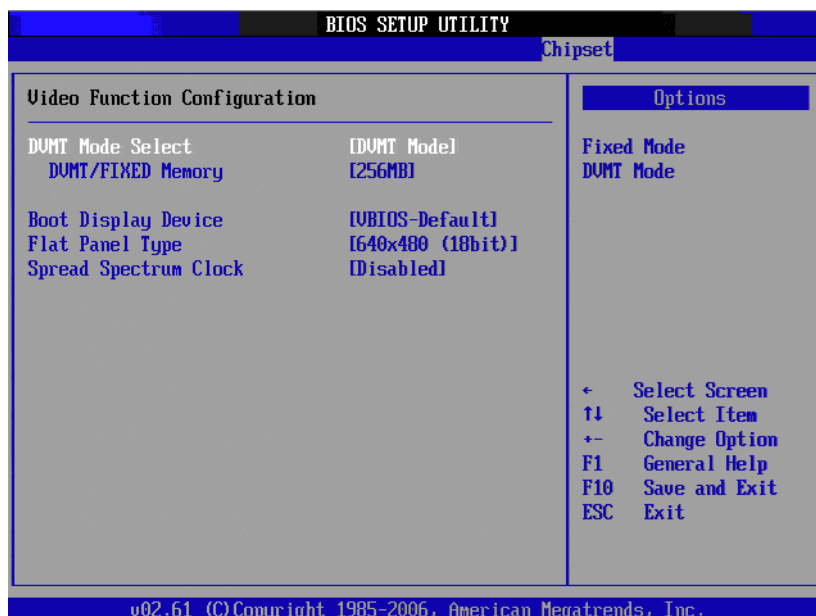
3.9 Advanced Chipset Settings



Figure 3.14 Advanced Chipset Settings

- **North Bridge Configuration**
Allows user to set graphic and memory controller configurations.
- **South Bridge Configuration**
Allows user to set I/O port configurations.
- **Spread Spectrum**
Enable/Disable spread spectrum. Enable spread spectrum function can have better EMI compatibility but may cause some unexpected peripheral device incompatibility issue.





- **DRAM Frequency**
Allows user to set DDR2 memory operating frequency.
- **Configure DRAM Timing by SPD**
Allows user to set DRAM operating timing coefficients by SPD or Manual.
- **Internal Graphics Mode Select**
Allows user to set graphic mode for DOS environment. Available options include Disable, Enable 4MB, Enable 8MB.
- **Video Function Configuration**
This allows user to set IGD (Integrated Graphics Device) configuration.
- **DVMT model select**
Displays the active system memory mode.
- **DVMT / FIXED Memory**
Specify the amount of DVMT / FIXED system memory to allocate for video memory.
- **Flat Panel Type**
Allows user to set LVDS panel resolution and signal width. This should match the specification of LVDS panel connected to the CPU card.
- **Spread Spectrum Clock**
Enable/Disable Spread Spectrum Clock. Enable spread spectrum function can have better EMI compatibility but may cause some unexpected peripheral device incompatibility issue.



Figure 3.15 South Bridge Configuration

- **USB Functions**
Select: Disabled, 2 USB Ports, 4 USB Ports, 6 USB Ports or 8 USB Ports.
- **USB 2.0 Controller**
Enables or disables the USB 2.0 controller.
- **LAN 1 Controller**
Enables or disables the LAN 1 GbE controller. The options below are also available.
 - Boot from LAN1
Allows user to enable or disable the function of LAN booting from a PXE server.
 - LAN1 Wake Up From S5
Enables or disables LAN1 Wake Up From S5 function.
- **HDA Controller**
Enables or disables the High Definition audio controller.
- **SMBUS Controller**
Enables or disables the SMBUS controller.
- **Reserved Page Route**
Allows user to set Port 80 information output port. Available options include PCI, LPC.
- **SLP_S4# Min. Assertion Width**
This is for setting delay time between stand by power readiness and ICH SLP_S4# signal triggering. Available options include 1 to 2 seconds, 2 to 3 seconds, 3 to 4 seconds, 4 to 5 seconds.

3.10 Exit Options



Figure 3.16 Exit Options

3.10.1 Save Changes and Exit

When you have completed system configuration, select this option to save your changes, exit BIOS setup and reboot the computer so the new system configuration parameters can take effect.

1. Select Save Changes and Exit from the Exit menu and press <Enter>. The following message appears:
Save Configuration Changes and Exit Now?
[Ok] [Cancel]
2. Select Ok or Cancel.

3.10.2 Discard Changes and Exit

Select this option to quit Setup without making any permanent changes to the system configuration.

1. Select Discard Changes and Exit from the Exit menu and press <Enter>. The following message appears:
Discard Changes and Exit Setup Now?
[Ok] [Cancel]
2. Select Ok to discard changes and exit.

3.10.3 Discard Changes

3. Select Discard Changes from the Exit menu and press <Enter>.

3.10.4 Load Optimal Defaults

The PCA-6782 automatically configures all setup items to optimal settings when you select this option. Optimal Defaults are designed for maximum system performance, but may not work best for all computer applications. In particular, do not use the Optimal Defaults if your computer is experiencing system configuration problems. Select Load Optimal Defaults from the Exit menu and press <Enter>.

3.10.5 Load Failsafe Defaults

The PCA-6782 automatically configures all setup options to failsafe settings when you select this option. Failsafe Defaults are designed for maximum system stability, but not maximum performance. Select Failsafe Defaults if your computer is experiencing system configuration problems.

1. Select Load Failsafe Defaults from the Exit menu and press <Enter>. The following message appears:
Load Failsafe Defaults?
[OK] [Cancel]
2. Select OK to load Failsafe defaults.

Chapter 4

Value-Added Software Services

4.1 Value-Added Software Services

Software API: An interface that defines the ways in which an application program may request services from libraries and/or operating systems. Provides not only the underlying drivers required but also a rich set of user-friendly, intelligent and integrated interfaces, which speeds development, enhances security and offers add-on value for Advantech platforms. It plays the role of catalyst between developer and solution, and makes Advantech embedded platforms easier and simpler to adopt and operate with customer applications.

4.1.1 Software API

4.1.1.1 Control

GPIO



General Purpose Input/Output is a flexible parallel interface that allows a variety of custom connections. allows users to monitor the level of signal input or set the output status to switch on/off the device. Our API also provide Programmable GPIO, allows developers to dynamically set the GPIO input or output status.

4.1.1.2 Display

Brightness Control



The Brightness Control API allows a developer to control brightness easily on an embedded device.

Backlight



The Backlight API allows a developer to control the backlight (screen) on/off on an embedded device.

4.1.1.3 Monitor

Watchdog



A watchdog timer (WDT) is a device that performs a specific operation after a certain period of time if something goes wrong and the system does not recover on its own. A watchdog timer can be programmed to perform a warm boot (restarting the system) after a certain number of seconds.

Hardware Monitor



The Hardware Monitor (HWM) API is a system health supervision API that inspects certain condition indexes, such as fan speed, temperature and voltage.

4.1.1.4 Power Saving

CPU Speed



Make use of Intel SpeedStep technology to reduce power consumption. The system will automatically adjust the CPU speed depending on the system loading.

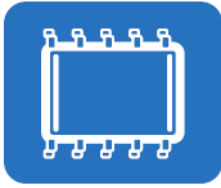
System Throttling



Refers to a series of methods for reducing power consumption in computers by lowering the clock frequency. This API allows the user to reduce the clock speed to 87.5% to 12.5% of normal.

4.1.2 Software Utility

BIOS Flash



The BIOS Flash utility allows customers to update the flash ROM BIOS version, or use it to back up current BIOS by copying it from the flash chip to a file on customers' disk. The BIOS Flash utility also provides a command line version and API for fast implementation into customized applications.

Embedded Security ID



The embedded application is the most important property of a system integrator. It contains valuable intellectual property, design knowledge and innovation, but it is easily copied! Embedded Security ID utility provides reliable security functions for customers to secure their application data within embedded BIOS.

Monitoring



Monitoring is a utility for customer to monitor the system health, like voltage, CPU and system temperature and fan speed. These items are important to a device; if the critical errors happen and are not solved immediately, permanent damage may be caused.

Flash Lock



Flash Lock is a mechanism to bind the Board and CF card (SQFlash) together. User can "Lock" SQFlash via Flash Lock function and "Unlock" by BIOS while booting. A locked SQFlash cannot be read by any card reader or boot from other platforms without a BIOS with an "Unlock" feature.

eSOS

(Requires BIOS Customization)



The eSOS is a small OS stored in BIOS ROM. It will boot up in case of main OS crash. It will diagnose the hardware status, and then send an e-mail to administrator. The eSOS also provide Remote Connection: Telnet server and FTP server for administrator to rescue the system. Note: This function requires BIOS customization.

Chapter 5

Chipset Software
Installation Utility

5.1 Before You Begin

To facilitate the installation of the enhanced display drivers and utility software, read the instructions in this chapter carefully. The drivers for the PCA-6782 are located on the software installation CD. The driver in the folder of the driver CD will guide and link you to the utilities and drivers under a Windows system. Updates are provided via Service Packs from Microsoft*.

Note! *The files on the software installation CD are compressed. Do not attempt to install the drivers by copying the files manually. You must use the supplied SETUP program to install the drivers.*



Before you begin, it is important to note that most display drivers need to have the relevant software application already installed in the system prior to installing the enhanced display drivers. In addition, many of the installation procedures assume that you are familiar with both the relevant software applications and operating system commands. Review the relevant operating system commands and the pertinent sections of your application software's user manual before performing the installation.

5.2 Introduction

The Intel® Chipset Software Installation (CSI) utility installs the Windows INF files that outline to the operating system how the chipset components will be configured. This is needed for the proper functioning of the following features:

- Core PCI PnP services
- IDE Ultra ATA 100/66/33 and Serial ATA interface support
- USB 1.1/2.0 support (USB 2.0 driver needs to be installed separately for Win98)
- Identification of Intel® chipset components in the Device Manager
- Integrates superior video features. These include filtered sealing of 720 pixel DVD content, and MPEG-2 motion compensation for software DVD

5.3 Windows 7/XP Driver Setup

1. Insert the driver CD into your system's CD-ROM drive. You can see the driver folder items. Navigate to the "DRV_INF" folder and click "infinst_autol.exe" to complete the installation of the driver.

Note! *Wrong driver installation may cause unexpected system instability.*



Chapter 6

Integrated Graphic
Device Setup

6.1 Introduction

To benefit from the Intel® Atom™ D525/N455 integrated graphics controller, you need to install the graphic driver.

6.2 Windows 7/XP Driver Setup

Note! Before installing this driver, make sure the CSI utility has been installed in your system. See Chapter 4 for information on installing the CSI utility.



Insert the driver CD into your system's CD-ROM drive. You can see the driver folders items. Navigate to the "DRV_VGA" folder and click "setup.exe" to complete the installation of the driver.

Note! Wrong driver installation may cause unexpected system instability.



Chapter 7

LAN Configuration

7.1 Introduction

The PCA-6782 has Signal Gigabit Ethernet LANs via dedicated PCI Express x1 lanes (Intel 82567V offers bandwidth of up to 500 MB/sec, eliminating the bottleneck of network data flow and incorporating Gigabit Ethernet at 1000 Mbps).

7.2 Installation

Note! Before installing the LAN drivers, make sure the CSI utility has been installed on your system. See Chapter 4 for information on installing the CSI utility.



The PCA-6782's Intel 82567V (LAN1) Gigabit integrated controllers support all major network operating systems. However, the installation procedure varies from system to system. Please find and use the section that provides the driver setup procedure for the operating system you are using.

7.3 Windows 7/XP Driver Setup

Insert the driver CD into your system's CD-ROM drive. Navigate to the "DRV_LAN" folder and click "setup.exe" to complete the installation of the driver.

Note! Wrong driver installation may cause unexpected system instability.



Appendix **A**

Programming the
Watchdog Timer

A.1 Watchdog Timer

The PCA-6782's watchdog timer can be used to monitor system software operation and take corrective action if the software fails to function after a programmed period. This section describes the operation of the watchdog timer and how to program it.

A.1.1 Watchdog Timer Overview

The watchdog timer is built into the super I/O controller W83627DHG-P. It provides the following functions for user programming:

- Can be enabled and disabled by user program.
- Timer can be set from 1 to 255 seconds or 1 to 255 minutes.
- Generates an interrupt or resets signal if the software fails to reset the timer after time-out.

A.1.2 Reset/ Interrupt Selection

The JWDT1 jumper is used to trigger system reset signal or to change GPIO14 state in the event the watchdog timer is tripped. See Chapter 1 for detailed jumper settings.

A.1.3 Programming the Watchdog Timer

The I/O port address of the watchdog timer is 2E(hex) and 2F(hex).

2E (hex) is the address port. 2F(hex) is the data port.

You must first assign the address of the register by writing an address value into address port 2E(hex), then write/read data to/from the assigned register through data port 2F (hex).

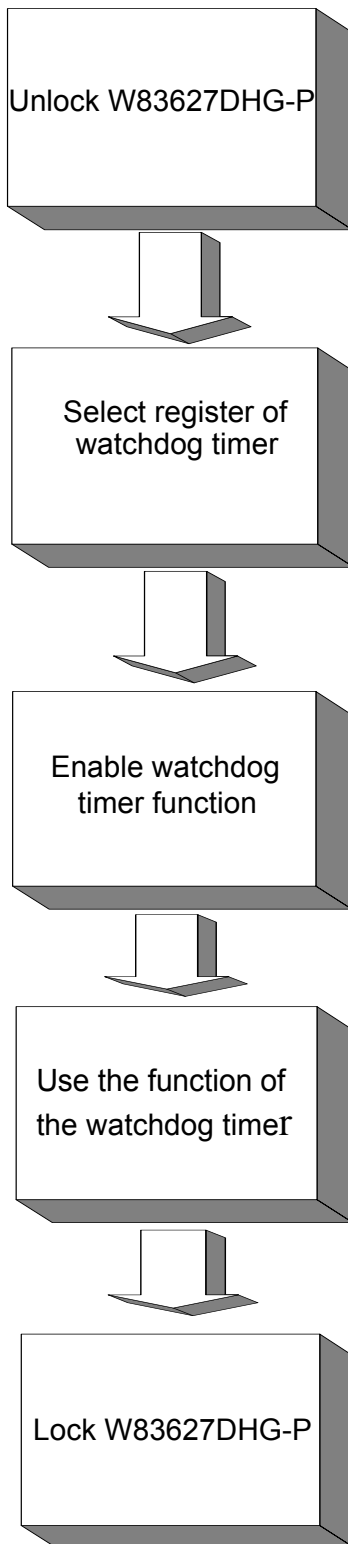


Table A.1: Watchdog Timer Registers

Address of register (2E)	Attribute	Value (2F) and description
87 (hex)	----	Write this address to I/O address port 2E (hex) twice to unlock the W83627DHG-P
07 (hex)	write	Write 08 (hex) to select register of watchdog timer.
30 (hex)	write	Write 01 (hex) to enable the function of the watchdog timer. Disabled is set as default.
F5 (hex)	write	Set seconds or minutes as units for the timer. Write 0 to bit 3: set second as counting unit. [default]
F6 (hex)	write	Write 1 to bit 3: set minute as counting unit 0: stop timer [default] 01~FF (hex): The amount of the count, in seconds or minutes, depends on the value set in register F5 (hex). This number decides how long the watchdog timer waits for strobe before generating an interrupt or reset signal. Writing a new value to this register can reset the timer to count with the new value.
F7 (hex)	read/write	Bit 6: Write 1 to enable keyboard to reset the timer, 0 to disable.[default] Bit 5: Write 1 to generate a timeout signal immediately and automatically return to 0. [default=0] Bit 4: Read status of watchdog timer, 1 means timer is ""time out"".
AA (hex)	----	Write this address to I/O port 2E (hex) to lock the watchdog timer.2

A.1.4 Example Program

1. Enable watchdog timer and set 10 sec. as timeout interval

```

;-----
Mov dx,2e          ; Unlock W83627DHG-P
Mov al,87h
Out dx,al
Out dx,al
;-----
Mov al,07h        ; Select registers of watchdog timer
Out dx,al
Inc dx
Mov al,08h
Out dx,al
;-----
Dec dx            ; Enable the function of watchdog timer
Mov al,30h
Out dx,al
Inc dx
Mov al,01h
Out dx,al
;-----
Dec dx            ; Set second as counting unit
Mov al,0f5h
Out dx,al
Inc dx
In al,dx
And al,not 08h
Out dx,al
;-----
Dec dx            ; Set timeout interval as 10 seconds and start counting
Mov al,0f6h
Out dx,al
Inc dx
Mov al,10
Out dx,al
;-----
Dec dx            ; lock W83627DHG-P
Mov al,0aah
Out dx,al

```

2. Enable watchdog timer and set 5 minutes as timeout interval

```

;-----
Mov dx,2eh        ; unlock W83627DHG-P
Mov al,87h
Out dx,al
Out dx,al

```

```

;-----
Mov al,07h      ; Select registers of watchdog timer
Out  dx,al
Inc  dx
Mov  al,08h
Out  dx,al
;-----
Dec dx          ; Enable the function of watchdog timer
Mov  al,30h
Out  dx,al
Inc  dx
Mov  al,01h
Out  dx,al
;-----
Dec dx          ; Set minute as counting unit
Mov  al,0f5h
Out  dx,al
Inc  dx
In   al,dx
Or  al,08h
Out  dx,al
;-----
Dec dx          ; Set timeout interval as 5 minutes and start counting
Mov  al,0f6h
Out  dx,al
Inc  dx
Mov  al,5
Out  dx,al
;-----
Dec dx          ; lock W83627DHG-P
Mov  al,0aah
Out  dx,al
3.    Enable watchdog timer to be reset by mouse
;-----
Mov dx,2eh      ; unlock W83627DHG-P
Mov al,87h
Out dx,al
Out dx,al
;-----
Mov al,07h      ; Select registers of watchdog timer
Out  dx,al
Inc  dx
Mov  al,08h
Out  dx,al
;-----

```



```

Dec dx          ; Enable the function of watchdog timer
Mov  al,30h
Out  dx,al
Inc  dx
Mov  al,01h
Out  dx,al

```

```

;-----
Dec dx          ; Enable watchdog timer to be reset by mouse
Mov  al,0f7h
Out  dx,al
Inc  dx
In   al,dx
Or  al,80h
Out  dx,al

```

```

;-----
Dec dx          ; lock W83627DHG-P
Mov  al,0aah
Out  dx,al
4.   Enable watchdog timer to be reset by keyboard

```

```

;-----
Mov dx,2eh      ; unlock W83627DHG-P
Mov al,87h
Out dx,al
Out dx,al

```

```

;-----
Mov al,07h      ; Select registers of watchdog timer
Out  dx,al
Inc  dx
Mov  al,08h
Out  dx,al

```

```

;-----
Dec dx          ; Enable the function of watchdog timer
Mov  al,30h
Out  dx,al
Inc  dx
Mov  al,01h
Out  dx,al

```

```

;-----
Dec dx          ; Enable watchdog timer to be strobed reset by keyboard
Mov  al,0f7h
Out  dx,al
Inc  dx
In   al,dx
Or  al,40h
Out  dx,al

```

```

;-----
Dec dx          ; lock W83627DHG-P
Mov   al,0aah
Out   dx,al
5.    Generate a time-out signal without timer counting
;-----

Mov dx,2eh     ; unlock W83627DHG-P
Mov al,87h
Out dx,al
Out dx,al
;-----

Mov al,07h     ; Select registers of watchdog timer
Out   dx,al
Inc   dx
Mov   al,08h
Out   dx,al
;-----

Dec dx          ; Enable the function of watchdog timer
Mov   al,30h
Out   dx,al
Inc   dx
Mov   al,01h
Out   dx,al
;-----

Dec dx          ; Generate a time-out signal
Mov   al,0f7h
Out   dx,al          ;Write 1 to bit 5 of F7 register
Inc   dx
In    al,dx
Or   al,20h
Out   dx,al
;-----

Dec dx          ; lock W83627DHG-P
Mov   al,0aah
Out   dx,al

```

Appendix **B**

I/O Pin Assignments

B.1 Front Panel Connectors (JFP1)

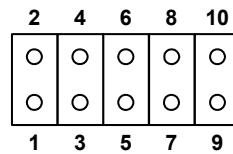


Table B.1: Front Panel Connectors (JFP1)

Pin	Signal	Pin	Signal
1	VCC3	2	HDD LED
3	VCC3	4	Power LED
5	5 VSB	6	Suspend LED
7	System Reset Button	8	GND
9	ATX Power Button	10	GND

B.2 USB Ports (USB12/USB34/USB56/USB78)

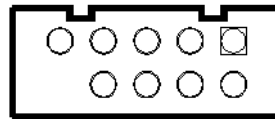


Table B.2: USB Ports (USB12/USB34/USB56/USB78)

Pin	Signal	Pin	Signal
1	VCC	2	VCC
3	USB Data1-	4	USB Data2-
5	USB Data1+	6	USB Data2+
7	GND	8	GND
9	NC	10	

B.3 IR Connector (JIR1)

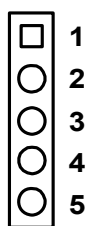


Table B.3: IR Connector (JIR1)

Pin	Signal
1	VCC
2	NC
3	IR_RX
4	GND
5	IR_TX

B.4 Serial port (COM1)

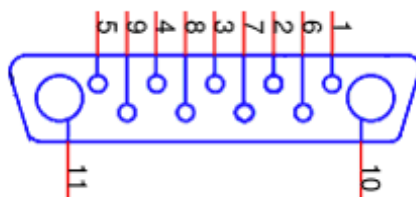


Table B.4: Serial port (COM1)

Pin	Signal	Pin	Signal
1	DCD	2	SIN
3	SOUT	4	DTR
5	GND	6	DSR
7	RTSA	8	CTS
9	RIA	10	GND
11	GND		

B.5 Serial port (COM2)

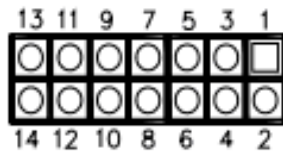


Table B.5: Serial port (COM2)

Pin	Signal	Pin	Signal
1	DCD	2	DSR
3	SIN	4	RTS
5	SOUT	6	CTS
7	DTR	8	RI
9	GND	10	GND
11	NC	12	NC
13	NC	14	NC

B.6 PS/2 keyboard and mouse connector (KBMS1)

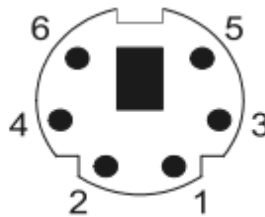


Table B.6: PS/2 keyboard and mouse connector (KBMS1)

Pin	Signal	Pin	Signal
1	PS2 keyboard data	2	PS2 mouse data
3	GND	4	VCC
5	PS2 keyboard clock	6	PS2 mouse clock

B.7 External keyboard and mouse connector (KBMS2)



Table B.7: External keyboard and mouse connector (KBMS2)

Pin	Signal
1	PS2 keyboard clock
2	PS2 keyboard data
3	PS2 mouse data
4	GND
5	VCC
6	PS2 mouse clock

B.8 ATX Feature connector(ATXF1)

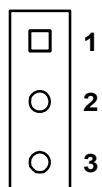


Table B.8: ATX Feature connector(ATXF1)

Pin	Signal
1	5V standby
2	VCC
3	PS_ON#

B.9 CPU FAN connector (CPUFAN1)

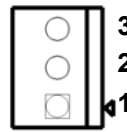


Table B.9: CPU FAN connector (CPUFAN1)

Pin	Signal
1	GND
2	+12V
3	FAN_TACH

B.10 System FAN connector (SYSFAN1)

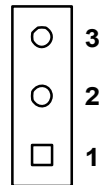


Table B.10: System FAN connector (SYSFAN1)

Pin	Signal
1	GND
2	+12V
3	FAN_TACH

B.11 Audio Interface Connector (HDAUD1)

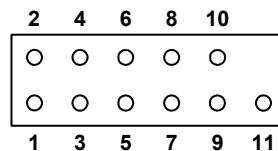


Table B.11: Audio Interface Connector (HDAUD1)

Pin	Signal	Pin	Signal
1	ACZ_VCC	2	GND
3	ACZ_SYNC	4	ACZ_BITCLK
5	ACZ_SDOUT	6	ACZ_SDIN0
7	ACZ_SDIN1	8	ACZ_RST#
9	ACZ_12V	10	GND
11	GND	12	

B.12 GPIO Header (GPIO1)

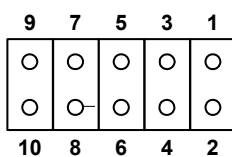


Table B.12: GPIO Header (GPIO1)

Pin	Signal	Pin	Signal
1	GPIO1	2	GPIO5
3	GPIO2	4	GPIO6
5	GPIO3	6	GPIO7
7	GPIO4	8	GPIO8
9	VCC	10	GND

B.13 LVDS Connector (LVDS1)

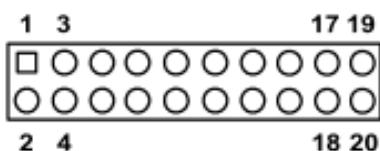


Table B.13: LVDS Connector (LVDS1)

Pin	Signal	Pin	Signal
1	GND	2	GND
3	NC	4	LVDS0_D0+
5	NC	6	LVDS0_D0-
7	NC	8	LVDS0_D1+
9	NC	10	LVDS0_D1-
11	NC	12	LVDS0_D2+
13	NC	14	LVDS0_D2-
15	NC	16	LVDS0_CLK+
17	NC	18	LVDS0_CLK-
19	LVDS power	20	LVDS power

B.14 LCD Inverter Connector (INV1)

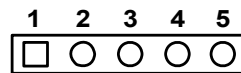


Table B.14: LCD Inverter Connector (INV1)

Pin	Signal
1	+12V
2	GND
3	Back-light enable signal output
4	Back-light VBR signal output
5	VCC

B.15 Low Pin Count Header (LPC1)

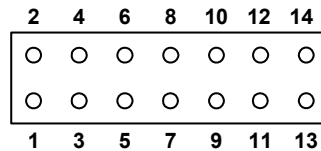


Table B.15: Low Pin Count Header (LPC1)

Pin	Signal	Pin	Signal
1	LPC_HEADER	2	LPC_LAD1
3	LPC_RST#	4	LPC_LAD0
5	LPC_FRAME#	6	+3.3V
7	LPC_LAD3	8	GND
9	LPC_LAD2	10	LPC_LDRQ1#
11	SERIRQ	12	PWROK
13	5V Standby	14	+5V

B.16 ATX Power Control Connector (ATX1)



Table B.16: ATX Power Control Connector (ATX1)

Pin	Signal	Pin	Signal
1	+5V	2	GND
3	GND	4	+12V
5	NC	6	GND
7	+5V		

B.17 VGA Connector (VGA1)

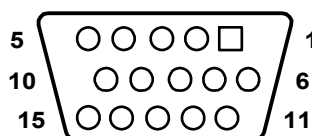


Table B.17: VGA Connector (VGA1)

Pin	Signal	Pin	Signal
1	VGA_R	2	VGA_G
3	VGA_B	4	NC
5	GND	6	GND
7	GND	8	GND
9	CRT_VCCIN	10	GND
11	NC	12	V_SDAT
13	H-SYNC	14	V-SYNC
15	V_SCLK		

B.18 Negative power input connector (12V1)



Table B.18: Negative power input connector (12V1)

Pin	Signal	Pin	Signal
1	-5V	2	GND
3	-12V		

B.19 Case open (JCASE1)



Table B.19: Case open (JCASE1)

Pin	Signal	Pin	Signal
1	CASEOP#	2	GND

B.20 FDD connector (FDD1)

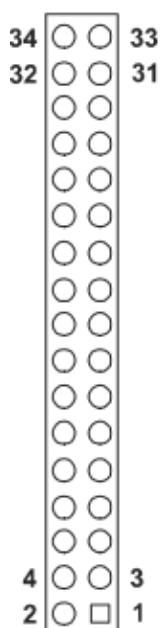


Table B.20: FDD connector (FDD1)

Pin	Signal	Pin	Signal
1	GND	2	DRVEN0
3	GND	4	NC
5	NC	6	NC
7	GND	8	INDEX#
9	GND	10	MOA#
11	GND	12	NC
13	GND	14	DSA#
15	GND	16	NC
17	GND	18	DIR#
19	GND	20	STEP#
21	GND	22	WD#
23	GND	24	WE#
25	GND	26	TRAK0#
27	GND	28	WP#
29	GND	30	RDATA#
31	GND	32	HEAD#
33	GND	34	DSKCHG#

B.21 Parallel port connector (LPT1)

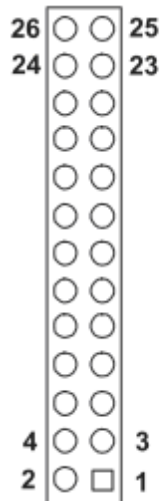


Table B.21: Parallel port connector (LPT1)

Pin	Signal	Pin	Signal
1	STB#	2	AFD#
3	D0	4	ERR#
5	D1	6	INIT#
7	D2	8	SLIN
9	D3	10	GND
11	D4	12	GND
13	D5	14	GND
15	D6	16	GND
17	D7	18	GND
19	ACK#	20	GND
21	BUSY	22	GND
23	PE	24	GND
25	SLCT	26	NC

B.22 IDE connector (IDE1)

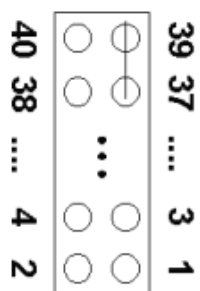


Table B.22: IDE connector (IDE1)

Pin	Signal	Pin	Signal
1	IDE RESET	2	GND
3	D7	4	D8
5	D6	6	D9
7	D5	8	D10
9	D4	10	D11
11	D3	12	D12
13	D2	14	D13
15	D1	16	D14
17	D0	18	D15
19	GND	20	NC
21	REQ	22	GND
23	IOW	24	GND
25	IOR	26	GND
27	READY	28	Cable Select
29	DACK	30	GND
31	IRQ14	32	NC
33	A1	34	ATA check
35	A0	36	A2
37	CS1#	38	CS3#
39	LED	40	GND

B.23 Serial ATA (SATA1/SATA2/SATA3)

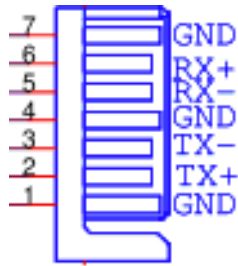


Table B.23: Serial ATA (SATA1/SATA2/SATA3)

Pin	Signal	Pin	Signal
1	GND	2	SATA TX+
3	SATA TX-	4	GND
5	SATA RX-	6	SATA RX+
7	GND		

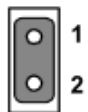
B.24 HW Monitor Alarm (JOBS1)



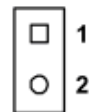
Table B.24: Serial ATA (SATA1/SATA2/SATA3)

Setting	Function
1-2 Closed	Enable OBS alarm
1-2 Open	Disable OBS alarm

OBS alarm
enabled



OBS alarm
disabled



B.25 LVDS VBR selection (JVBR1)



Table B.25: LVDS VBR selection (JVBR1)

Ping	Function
1-2 (default)	Linear way to control brightness*
2-3	PWM to control brightness

B.26 LVDS panel power selection (JLVDS1)



Table B.26: LVDS panel power selection (JLVDS1)

Ping	Function
1-2 (default)	+3.3 V
2-3	+5 V

B.27 Watchdog timer output selection (JWDT1)



Table B.27: Watchdog timer output selection (JWDT1)

Ping	Function
1-2	IRQ11
2-3 (default)	System Reset

B.28 CMOS clear (CMOS1)



Table B.28: CMOS clear (CMOS1)

Ping	Function
1-2 (default)	Keep CMOS data
2-3	Clear CMOS data

B.29 System I/O Ports

Table B.29: System I/O ports

Addr. range (Hex)	Device
000-008h	DMA controller
09h-0Eh	RESERVED
0Fh-18h	DMA Controller
19h-1Eh	RESERVED
1Fh	DMA Controller
20h-2Dh	Interrupt Controller
2E-2F	LPC SIO
30h-3Dh	Interrupt Controller
40h-42h	Timer/Counter
43h	RESERVED
4E-4F	LPC SIO
50h-52h	Timer/Counter
53h	RESERVED
60h	Microcontroller
61h	NMI Controller
62h-66h	Microcontroller
70h	RESERVED
71h-77h	RTC Controller
80h- 91h	DMA Controller,
92h	Reset Generator
93h-9Fh	DMA Controller
A0h-B1h	Interrupt Controller
B2h-B3h	Power Management
B4h-BDh	Interrupt Controller
C0h-D1h	DMA Controller
D2h-DDh	RESERVED
DEh-DFh	DMA Controller
F0h	PCI and Master Abort
170h-3F6h	IDE Controller (Mobile only), SATA Controller, or PCI

Table B.29: System I/O ports

4D0h-4D1h	Interrupt Controller
CF9h	Reset Generator
290h-29Fh	H/W monitor
C80h-CBFh	Additional Serial I/O module

B.30 DMA Channel Assignments

Table B.30: DMA channel assignments

Channel	Function
0	Available
1	Available
2	Floppy disk (8-bit transfer)
3	Available
4	Cascade for DMA controller 1
5	Available
6	Available
7	Available

B.31 Interrupt Assignments

Table B.31: Interrupt assignments

Priority	Interrupt#	Interrupt source
1	NMI	Parity error detected
2	IRQ0	Interval timer
3	IRQ1	Keyboard
-	IRQ2	Interrupt from controller 2 (cascade)
4	IRQ8	Real-time clock
5	IRQ9	Cascaded to INT 0A (IRQ 2)
6	IRQ10	Available/Serial communication port 3, 4, 5, 6
7	IRQ11	Available
8	IRQ12	PS/2 mouse
9	IRQ13	INT from co-processor
10	IRQ14	Primary IDE Channel
11	IRQ15	Secondary IDE Channel
12	IRQ3	Serial communication port 2
13	IRQ4	Serial communication port 1
14	IRQ5	Available
15	IRQ6	Diskette controller (FDC)
16	IRQ7	Parallel port 1 (print port)

B.32 1st MB Memory Map

Table B.32: 1st MB memory map

Addr. range (Hex)	Device
E0000h - FFFFFh	BIOS
CC000h - DFFFFh	Unused
C0000h - CDFFFh	VGA BIOS
A0000h - BFFFFh	Video Memory
00000h - 9FFFFh	Base memory

Appendix **C**

Programming the
GPIO

C.1 Supported GPIO Register

Bellow are detailed description of the GPIO addresses and programming sample.

C.1.1 GPIO Registers

Extended Function Index Registers (EFIRs)

The EFIRs are write-only registers with port address 2Eh on PC/AT systems.

Extended Function Data Registers(EFDRs)

The EFDRs are read/write registers with port address 2Fh on PC/AT systems.

CR07 (Logical Device Number Register)

Set to '09' to modify GPIO settings.

CRF0 (GP10-GP17 I/O selection register. Default 0xFF)

When set to '1', the respective GPIO port is programmed as an input port.

When set to '0', the respective GPIO port is programmed as an output port.

CRF1 (GP10-GP17 data register. Default 0x00)

If a port is programmed to be an output port, then its respective bit can be read/written.

If a port is programmed to be an input port, then its respective bit can only be read.

CRF2 (GP10-GP17 inversion register. Default 0x00)

When set to '1', the incoming/outgoing port value is inverted.

When set to '0', the incoming/outgoing port value is the same as in data register.

C.1.2 GPIO Example Program-1

 Enter the extended function mode, interruptible double-write

```
MOV DX, 2Eh
MOV AL, 87h
OUT DX, AL
OUT DX, AL
```

 Configure logical device 7(GP10~GP17), configuration register CRF0,CRF1,CRF2

```
MOV DX, 2Eh
MOV AL, 07h; point to Logical Device Number Reg.
OUT DX, AL
MOV DX, 2Fh
MOV AL, 07h; select logical device 7
OUT DX, AL
MOV DX, 2Eh
MOV AL, F0h
OUT DX, AL
MOV DX, 2Fh
MOV AL, 00h; 01: Input, 00: output for GP10~GP17
OUT DX, AL
MOV DX, 2Eh
MOV AL, F2h ;
OUT DX, AL
MOV DX, 2Fh
MOV AL, 00h; Set GPIO is normal not inverter
OUT DX, AL;
MOV DX, 2Eh
MOV AL, F1h
OUT DX, AL
MOV DX, 2Fh
MOV AL, ??h; Put the output value into AL
OUT DX, AL
```

Exit extended function mode

```
MOV DX, 2Eh
MOV AL, AAh
OUT DX, AL
```

Trusted ePlatform Services

ADVANTECH

www.advantech.com

Please verify specifications before quoting. This guide is intended for reference purposes only.

All product specifications are subject to change without notice.

No part of this publication may be reproduced in any form or by any means, electronic, photocopying, recording or otherwise, without prior written permission of the publisher.

All brand and product names are trademarks or registered trademarks of their respective companies.

© Advantech Co., Ltd. 2010