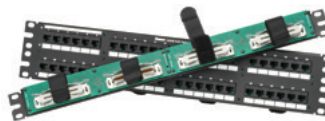


Data-Patch™ Category 5e RJ21 to RJ45 Patch Panels

specifications

Category 5e RJ21 to RJ45 patch panels shall feature 24 or 48 RJ45 ports on the front of the panel with four or eight RJ21 connectors on the back of the panel. Each RJ45 connector shall be fully wired to all eight pins and support 10/100/1000 Gigabit Ethernet performance. RJ21 connectors shall be wired per industry standards for backwards compatibility. Patch panels shall mount to standard EIA 19" or 23" racks and be available in flat or angled versions. Patch panels shall not require the use of a punchdown tool.



technical information

Category 5e/ Class D channel performance:	Exceeds all ANSI/TIA-C.2 Category 5e and ISO 11801 Class D channel standard requirements
Mounting option:	Mounts to standard 19" or 23" racks (23" rack requires use of extender bracket)
Packaging:	Packaged with M6 and #12-24 mounting screws

key features and benefits

RJ45 connector	All eight pins are utilized to support up to and including Gigabit Ethernet
RJ21 connector	Bridges RJ21 connectivity to RJ45 connectivity providing increased design flexibility and reduced installation costs
Secure connector	Accommodates 110° male cable assemblies on back of patch panel for greater system flexibility; screw connectors and Tak-Ty® Hook & Loop Cable Ties provide additional security
Optional angled patch panel design	Facilitates proper bend radius of each cable as it is routed panel design directly into a vertical cable manager; minimizes need for horizontal cable managers for improved rack density
Port and panel identification	Write-on areas follow TIA/EIA-606-B labeling standards; optional label kits available

applications

Data-Patch™ RJ21 to RJ45 Patch Panels utilize all eight pins of each RJ45 connector, providing support up to and including Gigabit Ethernet performance. The Data-Patch™ RJ21 to RJ45 Patch Panels are suitable for deployment to the zone or high performance workstations. The angled

patch panels manage high density network applications in half the vertical space of conventional cable management systems. Data-Patch™ RJ21 to RJ45 Patch Panels complement the Panduit cable management system for overall organized and efficient cabling and greater network reliability.

Data-Patch™ RJ21 to RJ45 Angled Patch Panels

24-port, 1 RU:	DPA245E88TV25
48-port, 2 RU:	DPA485E88TV25

Data-Patch™ RJ21 to RJ45 Flat Patch Panels

24-port, 1 RU:	DP245E88TV25
48-port, 2 RU:	DP485E88TV25

10/100/1000BASE-T Cable Assemblies – RJ21 Plug to RJ21 Plug

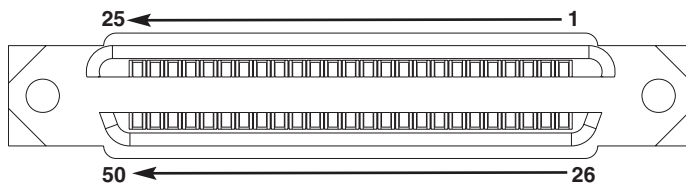
Straight, 110° right orientation:	UTPCH*SR25Y
Straight, 110° left orientation:	UTPCH*SL25Y
Both, 110° left orientation:	UTPCH*L25Y
Both, 110° right orientation:	UTPCH*R25Y
110° left orientation:	
110° right orientation:	UTPCH*LR25Y

Accessories

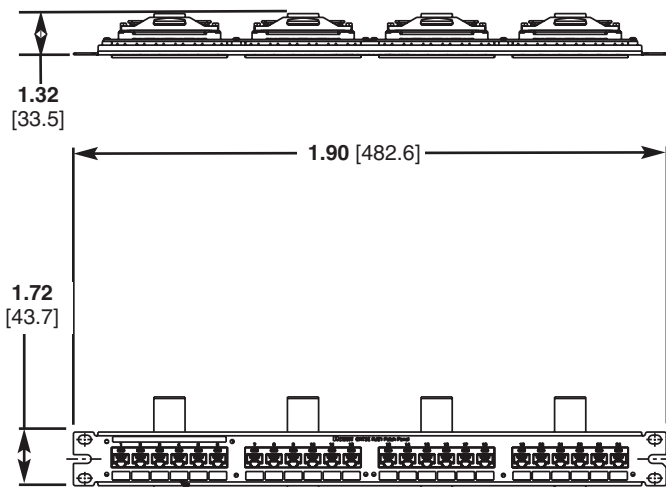
One rack space extender bracket:	PEB1
Two rack space extender bracket:	PEB2
24-port label kit:	DPLK24
48-port label kit:	DPLK48

Data-Patch™ Category 5e RJ21 to RJ45 Patch Panels

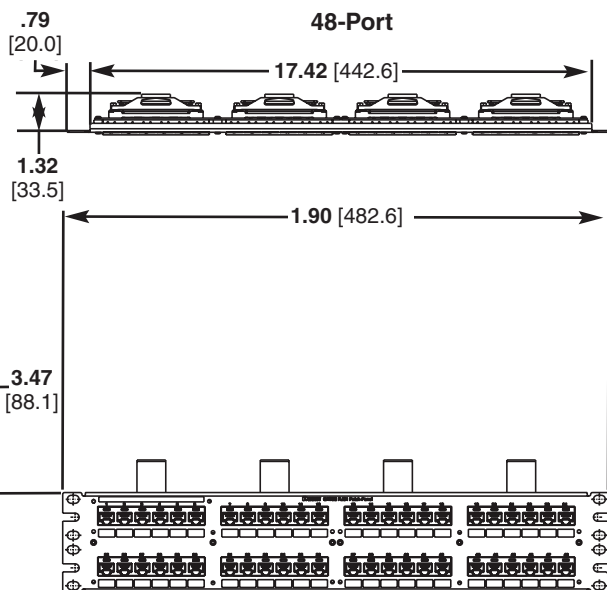
50-Pin Female Connector



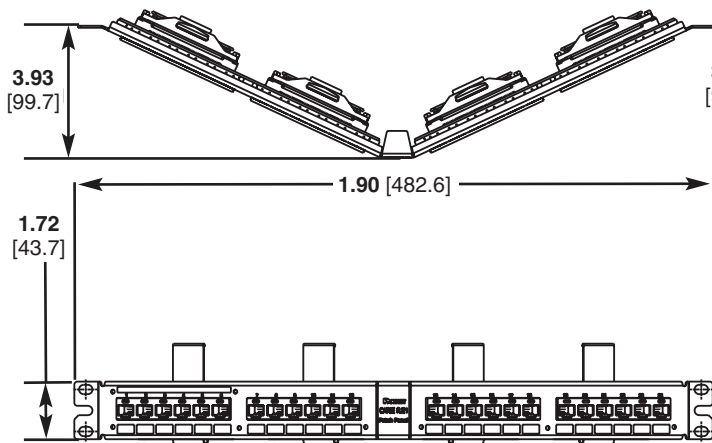
24-Port



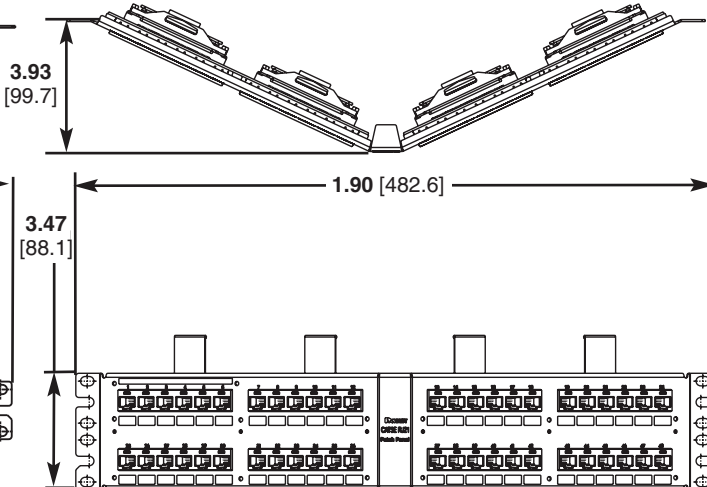
48-Port



24-Port Angled



48-Port Angled



Dimensions are in inches (Dimensions in parenthesis are metric)

WORLDWIDE SUBSIDIARIES AND SALES OFFICES

PANDUIT CANADA
Markham, Ontario
cs-cdn@panduit.com
Phone: 800.777.3300

PANDUIT EUROPE LTD.
London, UK
cs-emea@panduit.com
Phone: 44.20.8601.7200

PANDUIT SINGAPORE PTE. LTD.
Republic of Singapore
cs-ap@panduit.com
Phone: 65.6305.7575

PANDUIT JAPAN
Tokyo, Japan
cs-japan@panduit.com
Phone: 81.3.6863.6000

PANDUIT LATIN AMERICA
Guadalajara, Mexico
cs-la@panduit.com
Phone: 52.33.3777.6000

PANDUIT AUSTRALIA PTY. LTD.
Victoria, Australia
cs-aus@panduit.com
Phone: 61.3.9794.9020

For a copy of Panduit product warranties, log on to www.panduit.com/warranty

For more information

Visit us at www.panduit.com

Contact Customer Service by email: cs@panduit.com
or by phone: 800.777.3300

PANDUIT®

©2015 Panduit Corp.
ALL RIGHTS RESERVED.
COSP352-WW-ENG
Replaces WW-COSP129
1/2015