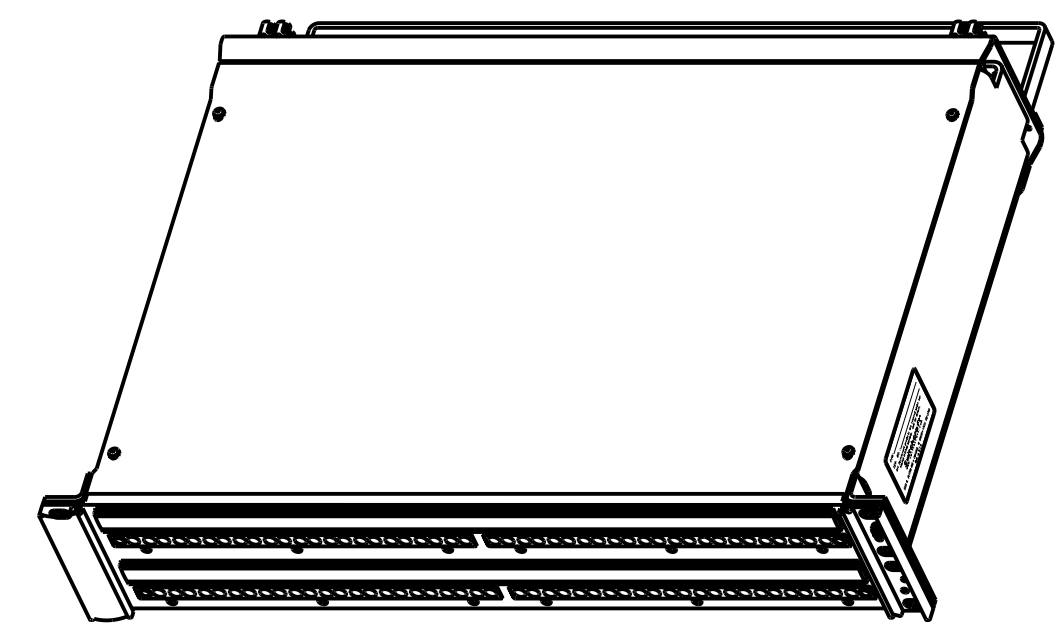


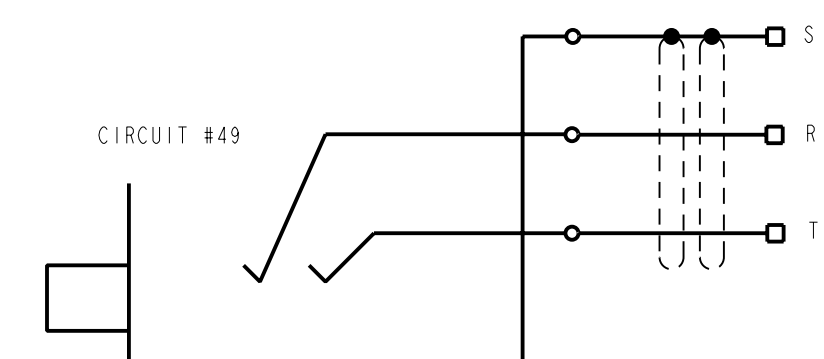
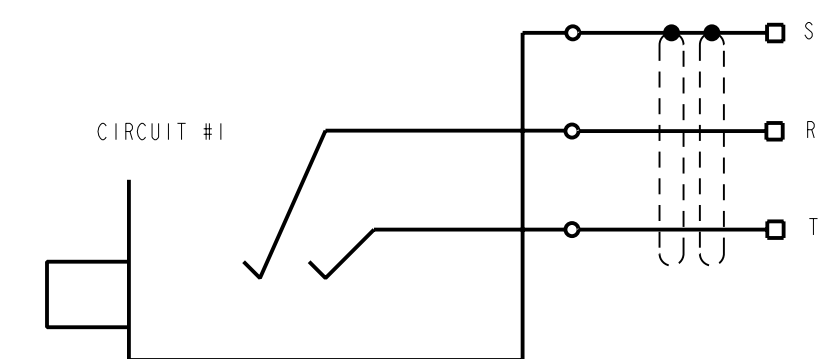
TT JACKS (96)

THIS PART REMOVED FOR CLARITY



SCALE 1:4

NON-NORMALLED



NOTES:

- 1) 96 TT JACKS:
A) FRAME AND ASSEMBLY SCREWS ARE NICKEL PLATED.
B) SWITCHING CONTACTS ARE GOLD PLATED.
- 2) FOR REAR PANEL IDC CONNECTION USE SWITCHCRAFT #PTI PUNCH DOWN TOOL.
- 3) SPLIT MARKING STRIPS INTO 4 SETS OF 3 ROW STRIPS.

CUSTOMER DRAWING

STAR SYMBOL DENOTES CRITICAL DIMENSION UNLESS OTHERWISE SPECIFIED 1. ALL DIMENSIONS IN INCHES - TWO PLACE DECIMALS ±0.01 - THREE PLACE DECIMALS ±0.005 - ANGLES ±1° - ALL DIA. CONCENTRIC WITHIN 0.005 T.I.R. 2. FEATURES ON THE SAME CENTERLINE MUST BE ALIGNED WITHIN ±0.002 3. REMOVE ALL BURRS					THIS DRAWING DESCRIBES A DESIGN CONSIDERED PROPRIETARY IN NATURE, DEVELOPED AND MANUFACTURED BY SWITCHCRAFT INC. AND IS RELEASED ON A CONFIDENTIAL BASIS FOR IDENTIFICATION PURPOSES ONLY.				
					SIZE	WIDTH	MULT	LBS/M	TEMPER
FINISH			MATERIAL						
SPEC No.			SPEC No.						
FIRST USED ON			SCALE						
DATE DRAWN			BY	CHKD	APVD				
10-Sep-04			JL	JF	JF				
			9-10-04 9-10-04						
NAME					PART No.				
DIGITAL PATCH PANEL					TTPW96K3NN				
REVISIONS					REV				
REV	ECO NUMBER	DATE	BY	APVD	A				
A	RELEASE TO PROD. 24779	9-10-04	JL	JF					