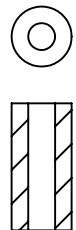


#4 CLEAR HOLE SPACER ENGINEERING KIT CAT. NO. SCR-4					
O. D. = .250 [6.35]		Brass	Aluminum	Nylon	Alum.-Econ.
Length	Hole Dia.	Cat. No.	Cat. No.	Cat. No.	Cat. No.
.250 [6.35]	.120 [3.05]	1454A	3457	876	398
.500 [12.70]	.120 [3.05]	1454C	3459	878	402
.750 [19.05]	.120 [3.05]	1454D	3460	880	418
1.00 [25.40]	.120 [3.05]	1454E	3461	882	420

#6 CLEAR HOLE SPACER ENGINEERING KIT CAT. NO. SCR-6					
O. D. = .250 [6.35]		Brass	Aluminum	Nylon	Alum.-Econ.
Length	Hole Dia.	Cat. No.	Cat. No.	Cat. No.	Cat. No.
.250 [6.35]	.144 [3.65]	1457A	3464	884	405
.500 [12.70]	.144 [3.65]	1457C	3466	886	409
.750 [19.05]	.144 [3.65]	1457D	3467	888	425
1.00 [25.40]	.144 [3.65]	1457E	3468	890	427



#8 CLEAR HOLE SPACER ENGINEERING KIT CAT. NO. SCR-8					
O. D. = .250 [6.35]		Brass	Aluminum	Nylon	Alum.-Econ.
Length	Hole Dia.	Cat. No.	Cat. No.	Cat. No.	Cat. No.
.250 [6.35]	.171 [4.34]	1480	3471	892	412
.500 [12.70]	.171 [4.34]	1482	3473	894	416
.750 [19.05]	.171 [4.34]	1483	3474	896	432
1.00 [25.40]	.171 [4.34]	1484	3475	898	434

NOTES:

1. A KIT HAS 25 PIECES OF EACH CAT.NO. FOR A TOTAL QUANTITY OF 400 PIECES AND IS HOUSED IN A 16 TRAY, LABELED ENCLOSURE.
2. MAT'L - .BRASS, NICKEL PLATE
 MAT'L - ALUMINUM, CLEAR IRIDITE
 MAT'L - NYLON 6/6
 MAT'L - ALUMINUM, ROLLED, UNFINISHED
3. DRAWS WILL BE ASSEMBLED WITH PLASTIC DIVIDER INSTALLED AND PRODUCT PLACED IN THE FRONT PORTION OF EACH DRAW.

KEYSTONE ELECTRONICS CORP.			
ASTORIA, N.Y. 11105-2017			
PART NAME .250 O.D. SPACER HARDWARE KITS			
MATERIAL AS NOTED			
FINISH AS NOTED		DRN BY BOONE	DATE 10.20.03
		APPD LN	SCALE -
TOLERANCES DECIMAL ± [±] ANGULAR ± UNLESS OTHERWISE SPECIFIED	INCH [MM]	CODE C/M	DWG NO. SCR-

DATE	DESCRIPTION	REV.