

| CIRCUIT SIZE | DIM. A | DIM. B | DIM. C | DIM. D |
|--------------|----------------|----------------|----------------|----------------|
| 20 | 13.90 .547 | 9.00 .354 | 12.58 .495 | 12.40 .488 |
| 30 | 18.90 .744 | 14.00 .551 | 17.58 .692 | 17.40 .685 |
| 40 | 23.90 .941 | 19.00 .748 | 22.58 .889 | 22.40 .882 |
| 50 | 28.90 1.138 | 24.00 .945 | 27.58 1.086 | 27.40 1.079 |
| 60 | 33.90 1.335 | 29.00 1.142 | 32.58 1.283 | 32.40 1.276 |
| 64 | 35.90 1.413 | 31.00 1.220 | 34.58 1.361 | 34.40 1.354 |
| 70 | 38.90 1.531 | 34.00 1.339 | 37.58 1.480 | 37.40 1.472 |
| 80 | 43.90 1.728 | 39.00 1.535 | 42.58 1.676 | 42.40 1.669 |
| 84 | 45.90 1.807 | 41.00 1.614 | 44.58 1.755 | 44.40 1.748 |
| 90 | 48.90 1.925 | 44.00 1.732 | 47.58 1.873 | 47.40 1.866 |
| 100 | 53.90 2.122 | 49.00 1.929 | 52.58 2.070 | 52.40 2.063 |
| 110 | 58.90 2.319 | 54.00 2.126 | 57.58 2.267 | 57.40 2.260 |
| 120 | 63.90 2.516 | 59.00 2.323 | 62.58 2.464 | 62.40 2.457 |

SEE NOTE 5

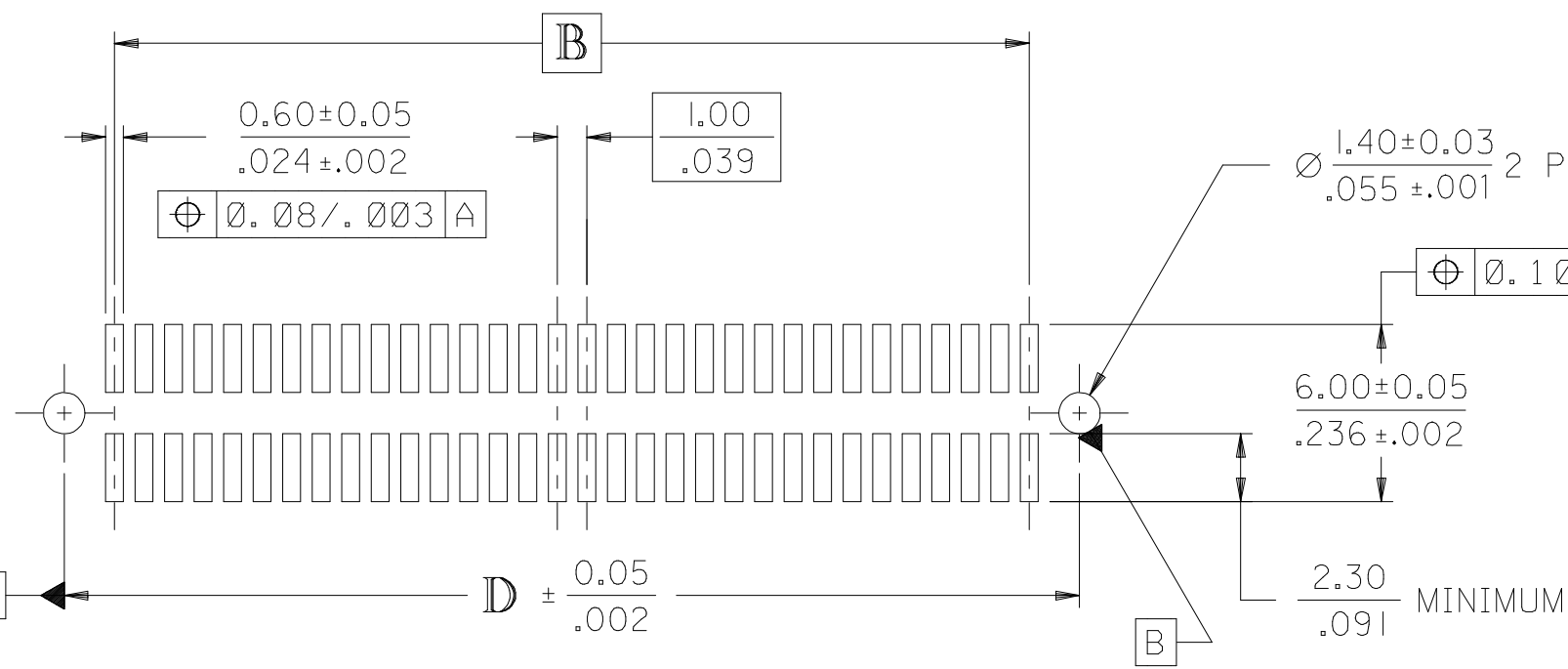
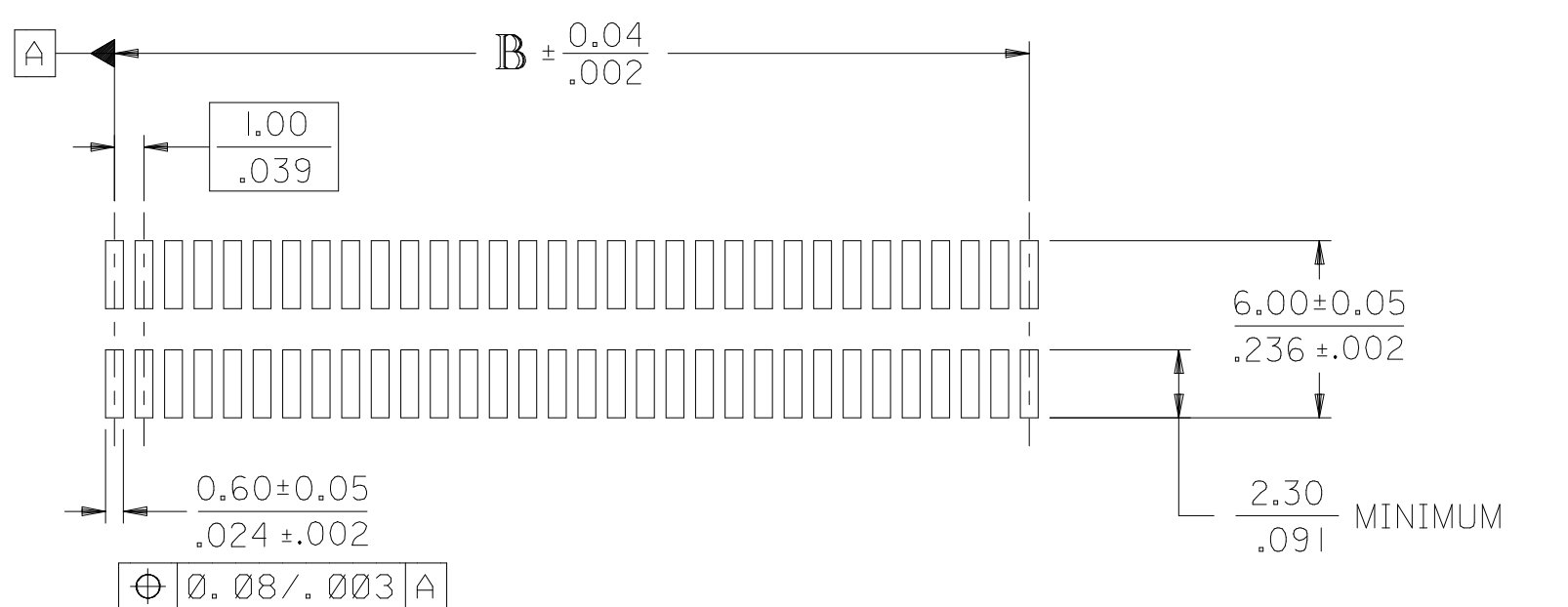
NOTES:

- 64-CIRCUIT PLUG ASSEMBLY WITH PEGS AND VACUUM CAP SHOWN FOR ILLUSTRATION PURPOSES ONLY.
- HOUSING MATERIAL: G.F. THERMOPLASTIC; UL RATING: 94V-0; COLOR: WHITE
TERMINAL MATERIAL: PHOSPHOR BRONZE; 0.205/.0080 THICK
VACUUM CAP MATERIAL: STAINLESS STEEL; 0.255/.0100 THICK
- COPLANARITY OF SMT TAILS: 0.10/.004 MAX.
- PACKAGING SPECIFICATIONS: REFER TO CHART ON SHEET 2.
- PEGS ARE OPTIONAL. REFER TO CHART ON SHEET 2.
- VACUUM PICK & PLACE CAP IS OPTIONAL. REFER TO CHART ON SHEET 2.
- THIS PART CONFORMS TO EIA STANDARD 700 AAAB FOR 1.0mm TWO-PART CONNECTORS FOR USE WITH PARALLEL PRINTED BOARDS.
- THIS PART, WHEN MATED WITH MOLEX 1.0mm RECEPTACLE CONNECTOR SERIES 71439, CONFORMS TO MOLEX PRODUCT SPECIFICATION PS-71436-9999. REFER TO CHART ON SHEET 2 FOR MATED STACK HEIGHT(S) FOR THIS PLUG.
- DIMENSIONS ARE IN MILLIMETER/INCH. INCH DIMENSIONS SHOWN FOR REFERENCE ONLY.

PLATING PER ES-88:

30 GOLD - 0.00076/.000030 MINIMUM GOLD PLATING IN CONTACT AREA,
0.0019/.000075 MINIMUM TIN PLATING IN TERMINAL AREA,
OVER 0.00127/.000050 MINIMUM NICKEL PLATING OVERALL

| | |
|-----|-----|
| 2 | D |
| 1 | D |
| SHT | REV |



**RECOMMENDED PCB LAYOUT
(WITH AND WITHOUT PEGS)**

RECOMMENDED PCB THICKNESS: 1.00±0.10/.039±.004 MINIMUM

| | |
|-------------------------|-------------|
| ADD -8464 | DESCRIPTION |
| EC NO: UCP2007-2362 | |
| DRWN:BBARKER 2007/04/03 | |
| CHKD:MIBARRA 2007/04/04 | |
| APPR:SMILLER 2007/04/11 | |
| REV | |

| | | |
|--|--------|--------|
| QUALITY SYMBOLS | | |
| ▽=0 | | |
| ▽=0 | | |
| GENERAL TOLERANCES (UNLESS SPECIFIED) | | |
| | mm | |
| | INCH | |
| 4 PLACES | ± --- | ± --- |
| 3 PLACES | ± --- | ± .005 |
| 2 PLACES | ± 0.13 | ± .01 |
| 1 PLACE | ± 0.25 | ± --- |
| ANGULAR ±1/2° | | |
| DRAFT WHERE APPLICABLE MUST REMAIN WITHIN DIMENSIONS | | |

| | |
|---|------------|
| DIMENSION STYLE | |
| MM/IN | |
| DRAWN BY | DATE |
| RKADAMS | 08/18/2004 |
| CHECKED BY | DATE |
| BBARKER | 08/18/2004 |
| APPROVED BY | DATE |
| SMILLER | 08/18/2004 |
| MATERIAL NO. | SEE TABLE |
| SIZE | C |
| THIS DRAWING CONTAINS INFORMATION THAT IS PROPRIETARY TO MOLEX INCORPORATED AND SHOULD NOT BE USED WITHOUT WRITTEN PERMISSION | |

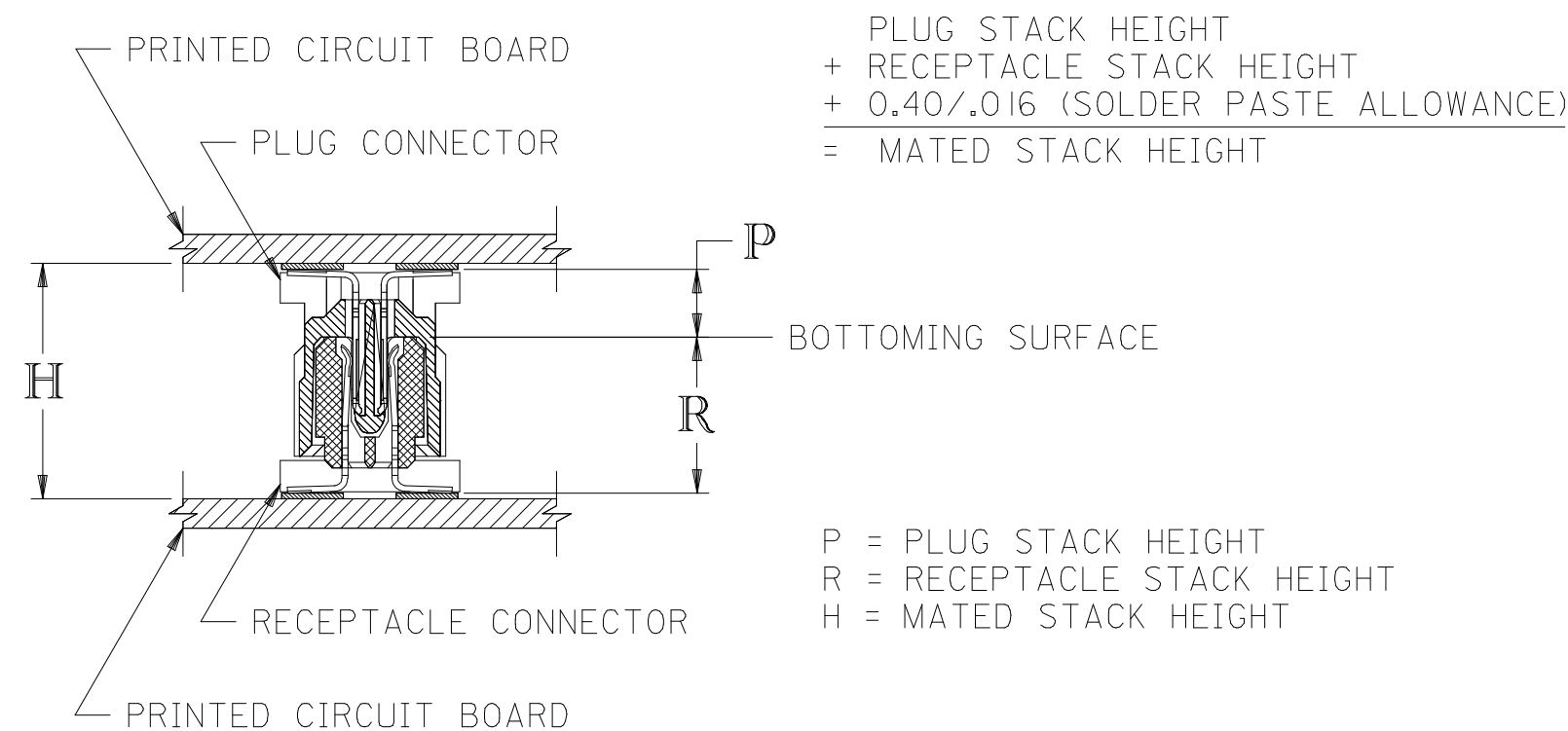
| | |
|--|--------------|
| SCALE | 4:1 |
| DESIGN UNITS | METRIC |
| THIRD ANGLE PROJECTION | |
| TITLE | |
| SALES ASSY, 1.0MM BOARD TO BOARD PLUG CONNECTOR 2.30/.090 STACK HEIGHT | |
| MOLEX INCORPORATED | |
| DOCUMENT NO. | SD-71436-001 |
| SHEET NO. | 1 OF 2 |

STANDARD

| CIRCUIT SIZE | PLUG ASSEMBLY ITEM NUMBER | PEGS | PICK & PLACE CAP | PACKAGING SPEC. NUMBER | PACKAGING TYPE |
|--------------|---------------------------|------|------------------|------------------------|----------------|
| 64 | 71436-8164 | YES | NO | PK-70873-0607 | TUBE |
| 64 | | YES | YES | PK-70873-0607 | TUBE |
| 64 | 71436-8464 | YES | YES | PK-70873-063 | TAPE & REEL |
| 64 | | NO | NO | PK-70873-0606 | TUBE |
| 64 | | NO | YES | PK-70873-0606 | TUBE |
| 64 | 71436-8864 | NO | YES | PK-70873-063 | TAPE & REEL |

RECOMMENDED PLUG/RECEPTACLE COMBINATION FOR MATED STACK HEIGHT PER EIA STANDARD 700 AAAB

| MATED STACK HEIGHT | RECEPTACLE HEIGHT | RECEPTACLE SERIES NO. | PLUG HEIGHT | PLUG SERIES NO. |
|--------------------|-------------------|-----------------------|-------------|-----------------|
| 8.00/.315 | 5.30/.209 | 71439-0*** | 2.30/.090 | 71436-8*** |



| | | | | |
|---|---|--|--|---|
| ADD -8464 EC NO: UCP2007-2362 DRWN:BBARKER 2007/04/03 CHKD:MIBARRA 2007/04/04 APPR:SMILLER 2007/04/11 | QUALITY SYMBOLS ▽=0 ▽=0 | GENERAL TOLERANCES (UNLESS SPECIFIED) mm INCH 4 PLACES ± --- ± --- 3 PLACES ± --- ± --- 2 PLACES ± --- ± --- 1 PLACE ± --- ± --- ANGULAR ±1/2° | DIMENSION STYLE MM/IN DRAWN BY: RKADAMS DATE: 08/18/2004 CHECKED BY: BBARKER DATE: 08/18/2004 APPROVED BY: SMILLER DATE: 08/18/2004 | SCALE: --- DESIGN UNITS: METRIC THIRD ANGLE PROJECTION |
| | DRAFT WHERE APPLICABLE MUST REMAIN WITHIN DIMENSIONS | | MATERIAL NO.: SEE TABLE DOCUMENT NO.: SD-71436-001 SHEET NO.: 2 OF 2 | TITLE: SALES ASSY, 1.0MM BOARD TO BOARD PLUG CONNECTOR 2.30/.090 STACK HEIGHT MOLEX INCORPORATED |
| | THIS DRAWING CONTAINS INFORMATION THAT IS PROPRIETARY TO MOLEX INCORPORATED AND SHOULD NOT BE USED WITHOUT WRITTEN PERMISSION | | | |
| | SIZE: C | | | |