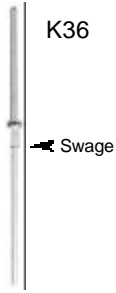


K36, K24

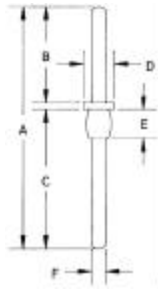
Inbord Pins for holes- .025"(.6mm) & .042" dia.



- Press-in pins provide excellent solder points
- Installation tools available separately
- Available in several sizes
- Plating note: Tin plated. Gold plating available on K24 & K31 styles. Add "A" suffix to numeric portion of part number.

Diamond knurl (K24 only)

Use P133A Insertion Tool

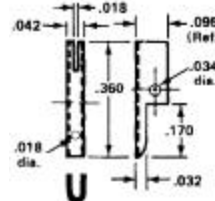


| Part No. | Pkg Qty | Hole Size | A | B | C | D | E | F |
|----------|---------|-----------|-------|-------|-------|-------|-------|-------|
| K24A/M* | 1000 | .042" | .650" | .255" | .375" | .073" | .080" | .039" |
| K24A/C | 100 | .042" | .650" | .255" | .375" | .073" | .080" | .039" |
| K24C/M* | 1000 | .042" | .650" | .255" | .375" | .073" | .080" | .039" |
| K24C/C | 100 | .042" | .650" | .255" | .375" | .073" | .080" | .039" |
| K30C/M | 1000 | .042" | .550" | .255" | .305" | .085" | .060" | .040" |
| K30C/C | 100 | .042" | .550" | .255" | .305" | .085" | .060" | .040" |
| K31C/M | 1000 | .042" | .375" | .160" | .195" | .075" | .060" | .040" |
| K31C/C | 100 | .042" | .375" | .160" | .195" | .075" | .060" | .040" |
| K36C/M | 1000 | .025" | .705" | .293" | .400" | .040" | .050" | .023" |
| K36C/C | 100 | .025" | .705" | .293" | .400" | .040" | .050" | .023" |

*Use in G-10 epoxy glass board only as knurled shoulder may split CEM-1 composite material

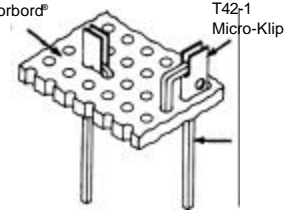
T42-1

Push-In Terminals for .042" diameter holes



- Wiring terminals for mounting leads or wires horizontally or vertically (through board hole)
- Connectors require no staking for most applications
- Horizontal slot holds up to seven wires, depending upon thickness of wire

"P" Pattern Vectorbord®



Use P149A (handle type) or P149 (shank type) Insertion tool

T28

Push-In Terminals for .062" diameter holes



- Wiring terminals for mounting leads or wires horizontally or vertically (through board hole)
- Vertical (longitudinal) slot holes .025" diameter leads or .22 gauge wires
- Includes .018" diameter tab hole which accepts transistor wires, can be used to hold an anchoring wire

Use P91A Insertion tool

| Part No. | Pkg Qty | A | B |
|----------|---------|-------|-------|
| T28/C | 100 | .437" | .237" |
| T28/M | 1000 | .437" | .237" |

R32

Socket Pins for .042" diameter holes



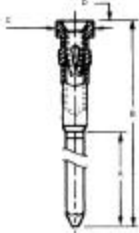
Use P158 Insertion Tool D9 Die Point

- Low profile wire-wrap socket pins
- Pressfit mounting
- Four-finger contacts, tapered sockets for easy insertion
- Accepts .015-.025 diameter leads
- Gold-plated contact surfaces

| Part No. | Pkg Qty | A | B | C | D | E | Male Pin Depth |
|----------|---------|-------|-------|-------|-------|-------|----------------|
| R32/C | 100 | .745" | .500" | .072" | .155" | .075" | .13" |
| R32/M | 1000 | .745" | .500" | .072" | .155" | .075" | .13" |

R30, R31, R53

Socket Pins for .055" diameter holes



- R30**
 - Low profile, pressfit pins, for hand or dip solder applications
 - Solder post is 0.110" long, extends 0.19" below and 0.030" above board surface
 - Gold-plated contact surfaces
- R31**
 - Low profile wire wrap
 - Four-finger contacts, tapered socket for easy insertion
 - Gold-plated contact surfaces
- R52**
 - Two level wire wrap
 - Tin-plated contact surfaces
- R53**
 - 3-level wire-wrap pins, .025" sq. posts
 - Six-finger contacts, low insertion force sockets
 - Gold-plated contact surfaces

| Part No. | Pkg Qty | A | B | C | D | Male Pin Depth |
|----------|---------|-------|-------|-------|-------|----------------|
| R30/C | 100 | .110" | .286" | .072" | .030" | .15" |
| R30/M | 1000 | .110" | .286" | .072" | .030" | .15" |
| R31/C | 100 | .500" | .703" | .072" | - | .17" |
| R52/C | 100 | .370" | .570" | .072" | .031" | .15-.22" |
| R52/M | 1000 | .370" | .570" | .072" | .031" | .15-.22" |
| R53/C | 100 | .500" | .700" | .062" | - | - |
| R53/M | 1000 | .500" | .700" | .062" | - | - |

T124

Solder Washers - 3 Sizes in Package



Multi-functional solder washer kits, with three sizes of washers. Different sizes provided to fit over sockets and tails of most Vector socket pins and wiring terminals. Ideal tools for committing pins to voltage and ground planes in Vectorbord® patterns, such as Voltage/Ground Plane and Vectorbord plus™, that have clearance area isolating holes from planes.

| T124/M (Includes 3 sizes) | Qty | I.D. | O.D. | Application |
|---------------------------|------|-------|-------|-------------|
| | 500 | .078" | .110" | Vcc Side |
| | 500 | .058" | .103" | GND Side |
| | 1000 | .040" | .106" | Connector |

| T124-040/500 | Qty | I.D. | O.D. | Application |
|--------------|-----|-------|-------|-------------|
| | 500 | .040" | .106" | Connector |