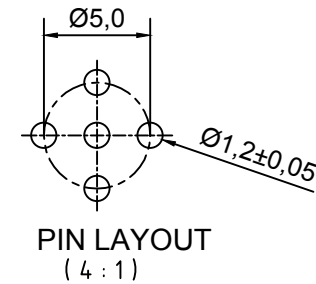
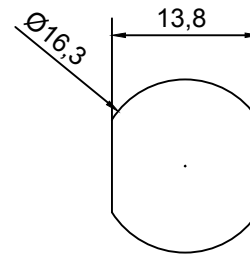


Ausschnitt / Cutout



ENG.-NO.: WR5U46000

Allgemeine Kennwerte General Characteristics		Norm Standard	
Polzahl	Number of contacts	IEC 947-5-2	5
Bemessungsspannung	Rated Voltage	IEC 664	60V AC / DC
Verschmutzungsgrad	Pollution Degree	IEC 664	3
Betriebsstrom	Current carrying capacity	IEC 512-3 Test 5 b	4A
Durchgangswiderstand	Contact Resistance	IEC 512-2 Test 2 A	< 5mΩ
Bemessungsstoßspannung	Rated Impulse	IEC 664	2kV
Prüfspannung	Test Voltage	IEC 60512-2 Test 4 A	1 kV / 60 sec
Isolationswiderstand	Insulation Resistance	IEC 512-2 Test 3 A	< 10 GΩ
IP - Schutzart	IP Degree Of Protection	IEC 529	IP69k
Stift Durchmesser	Pin Diameter		1,0mm
Werkstoffe	Kontakte	Contacts	Kupferlegierung / copper alloy
	Kontaktoberfläche	Contacts Plating	Au/Ni
	Kontaktträger	Dielectric Material	PA 6.6
	Dichtung (O-Ring)	Gaskets (O-Ring)	NBR
	Gehäuse	Housing	CuZn (brass) mit Ni-Oberfläche Nickel Plated
Anschlußart	Termination		Solder
Brennbarkeit	Kontaktträger	Inserts	UL 94 V-0
	Leitung / Kabel	Cable	VDE 0472 / 804
Mechanische Lebensdauer	Mechanical Operation		500 Steckzyklen / Mating Cycles
Temperaturbereich	Temperature Range	IEC 60668-1	-25°C / +90°C

DESCRIPTION EC NO: IPG2016-1320 DRWN: BBR/RAUCH 2016/03/31 CHKD: REISSNER 2016/03/31 APPR: RS/ILLER 2012/12/13	QUALITY SYMBOLS ▽ = 0 ▽ = 0	GENERAL TOLERANCES (UNLESS SPECIFIED)		DIMENSION STYLE MM ONLY		SCALE 2:1	DESIGN UNITS METRIC	THIRD ANGLE PROJECTION		
		mm	INCH	DATE	DATE	DATE	DATE			
REV B1	DESCRIPTION	4 PLACES	±---	±---	REISSNER	2012/12/03	REC M12 5P AC MA STR M16 BM SOL BRA NI			
		3 PLACES	±---	±---	CHECKED BY	DATE				
		2 PLACES	±0.05	±---	APOHL	2012/12/03	molex			
		1 PLACE	±0.3	±---	APPROVED BY	DATE				
		0 PLACE	±0.5	±---	CBURGER	2012/12/13			MATERIAL NO.	DOCUMENT NO.
		ANGULAR ± 1°		1200840031	SD-120084-170	SHEET NO.			1 OF 1	
DRAFT WHERE APPLICABLE MUST REMAIN WITHIN DIMENSIONS		SIZE A3	THIS DRAWING CONTAINS INFORMATION THAT IS PROPRIETARY TO MOLEX INCORPORATED AND SHOULD NOT BE USED WITHOUT WRITTEN PERMISSION							